

Recombinant human NDUFB9 protein

Catalog Number: ATGP2276

PRODUCT INFORMATION

Expression system

E.coli

Domain

1-179aa

UniProt No.

Q9Y6M9

NCBI Accession No.

NP_004996

Alternative Names

NADH dehydrogenase (ubiquinone) 1 beta subcomplex subunit 9, B22, LYRM3, uQOR22, NADH:ubiquinone oxidoreductase subunit B9, Complex I-B22, CI-B22, LYR motif-containing protein 3, NADH-ubiquinone oxidoreductase B22 subunit

PRODUCT SPECIFICATION

Molecular Weight

24.2 kDa (202aa)

Concentration

0.25mg/ml (determined by Bradford assay)

Formulation

Liquid in. 20mM Tris-HCl buffer (pH 8.0) containing 0.4M urea, 10% glycerol

Purity

> 85% by SDS-PAGE

Tag

His-Tag

Application

SDS-PAGE, Denatured

Storage Condition

Can be stored at +2C to +8C for 1 week. For long term storage, aliquot and store at -20C to -80C. Avoid repeated freezing and thawing cycles.

BACKGROUND

Description

NADH dehydrogenase (ubiquinone) 1 beta subcomplex subunit 9, also known as NDUFB9, belongs to the complex I LYR family. Localized to the inner mitochondrial membrane, as well as to the matrix side of the peripheral membrane, NDUFB9 functions as an accessory subunit of the multi-subunit mitochondrial membrane respiratory chain NADH dehydrogenase complex I. Complex I plays an important role in the transfer of electrons

Recombinant human NDUF9 protein

Catalog Number: ATGP2276

from NADH to the respiratory chain, a process that is essential for cellular respiration. Recombinant human NDuFB9 protein, fused to His-tag at N-terminus, was expressed in E. coli.

Amino acid Sequence

MGSSHHHHHHH SSGLVPRGSH MGSMAFLASG PYLTHQQKVL RLYKRALRHL ESWCVQRDKY RYFACLMRAR
FEEHKNEKDM AKATQLLKEA EEEFWYRQHP QPYIFDSPG GTSYERYDCY KVPEWCLDDW HPSEKAMYPD YFAKREQWKK
LRRESWEREV KQLQEETPPG GPLTEALPPA RKEGDLPLPW WYIVTRPRER PM

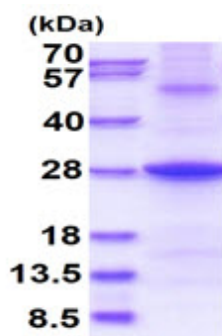
General References

Loeffen J L., et al. (1998) Biochem Biophys. 253:415-422.

Smeitink J A., et al. (1998) Hum Mol Genet. 7:1573-1579.

DATA

SDS-PAGE



15% SDS-PAGE (3ug)

3ug by SDS-PAGE under reducing condition and visualized by coomassie blue stain.