

# Recombinant human TINAGL1 protein

Catalog Number: ATGP2292

## PRODUCT INFORMATION

---

### Expression system

E.coli

### Domain

22-467aa

### UniProt No.

Q9GZM7

### NCBI Accession No.

NP\_071447

### Alternative Names

Tubulointerstitial nephritis antigen-like isoform 1

## PRODUCT SPECIFICATION

---

### Molecular Weight

52.5 kDa (469aa)

### Concentration

0.25mg/ml (determined by Bradford assay)

### Formulation

Liquid in. 20mM Tris-HCl buffer (pH 8.0) containing 0.4M urea, 10% glycerol

### Purity

> 85% by SDS-PAGE

### Tag

His-Tag

### Application

SDS-PAGE, Denatured

### Storage Condition

Can be stored at +2C to +8C for 1 week. For long term storage, aliquot and store at -20C to -80C. Avoid repeated freezing and thawing cycles.

## BACKGROUND

---

### Description

TINAGL1 is similar in sequence to tubulointerstitial nephritis antigen, a secreted glycoprotein that is recognized by antibodies in some types of immune-related tubulointerstitial nephritis. Three transcript variants encoding different isoforms have been found for this gene. Recombinant human TINAGL1 protein, fused to His-tag at N-terminus, was expressed in E. coli.

### Amino acid Sequence

MGSSHHHHHH SGLVPRGSH MGSAQQGRGR RELAPGLHLR GIRDAGGRYC QEQLCCRGR ADDCALPYLG

# Recombinant human TINAGL1 protein

Catalog Number: ATGP2292

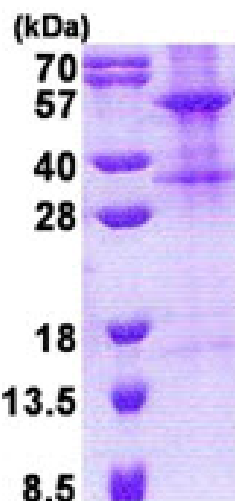
AICYCDLFCN RTVSDCCPDF WDFCLGVPPP FPPIQGCMHG GRIYPVLGTY WDNCNRCTCQ ENRQWQCDQE PCLVDPDMIK  
AINQGNYGWQ AGNHSAFWGM TLDEGIRYRL GTIRPSSSVN NMHEIYTVLN PGEVLPTAFE ASEKWPNIH EPLDQGNCAG  
SWAFSTAAVA SDRVSIHSLG HMTPLVSPQN LLSCDTHQQQ GCRGGRLDGA WWFLRRRGVV SDHCYPFSGR  
ERDEAGPAPP CMMHSRAMGR GKRQATAHCP NSYVNNNDIY QVTPVYRLGS NDKEIMKELM ENGPVQALME VHEDFFLYKG  
GIYSHTPVSL GRPERYRRHG THSVKITGWG EETLPDGRTL KYWTAANSWG PAWGERGHFR IVRGVNECDI ESFVLGVWGR  
VGMEDMGHH

## General References

Bromme NC, Wex T, et al. (2000). *Biochem Biophys Res Commun.* 271(2):474-80.  
Wex T, Lipyansky A, et al. (2001). *Biochemistry.* 40(5):1350-7.

## DATA

### SDS-PAGE



3ug by SDS-PAGE under reducing condition and visualized by coomassie blue stain.

15% SDS-PAGE (3ug)