

# Recombinant human TSSK2 protein

Catalog Number: ATGP2293

## PRODUCT INFORMATION

---

### Expression system

E.coli

### Domain

1-358aa

### UniProt No.

Q96PF2

### NCBI Accession No.

NP\_443732

### Alternative Names

Testis-specific serine/threonine-protein kinase 2, DGS-G, SPOGA2, STK22B, TSK2

## PRODUCT SPECIFICATION

---

### Molecular Weight

43 kDa (381aa)

### Concentration

0.25mg/ml (determined by Bradford assay)

### Formulation

Liquid in. 20mM Tris-HCl buffer (pH 8.0) containing 0.4M urea, 10% glycerol

### Purity

> 85% by SDS-PAGE

### Tag

His-Tag

### Application

SDS-PAGE, Denatured

### Storage Condition

Can be stored at +2C to +8C for 1 week. For long term storage, aliquot and store at -20C to -80C. Avoid repeated freezing and thawing cycles.

## BACKGROUND

---

### Description

TSSK2 is a testis-specific serine/threonine-protein kinase required during spermatid development. This protein phosphorylates TSKS at 'Ser-288' and SPAG16. TSSK2 involved in the late stages of spermatogenesis, during the reconstruction of the cytoplasm. During spermatogenesis, it is required for the transformation of a ring-shaped structure around the base of the flagellum originating from the chromatoid body. Recombinant human TSSK2 protein, fused to His-tag at N-terminus, was expressed in E. coli.

## Recombinant human TSSK2 protein

Catalog Number: ATGP2293

### Amino acid Sequence

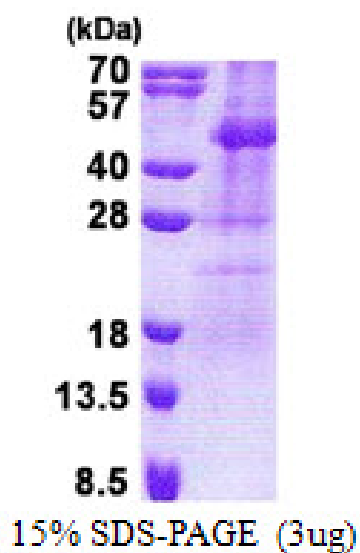
MGSSHHHHHH SSSLVPRGSH MGSMDATVL RKKGYIVGIN LGKGSYAKVK SAYSERLKFN VAVKIIDRKK TPTDFVERFL  
PREMDILATV NHGSIKTYE IFETSDGRIY IIMELGVQGD LLEFIKCQGA LHEDVARKMF RQLSSAVKYC HDLDIVHRDL  
KCENLLLDKD FNIKLSDFGF SKRCLRDSNG RIILSKTFCG SAAYAAPEVL QSIPYQPKVY DIWSLGVILY IMVCGSMPYD  
DSDIRKMLRI QKEHRVDFPR SKNLTCECKD LIYRMLQPDV SQRLHIDEIL SHSWLQPPKP KATSSASFKR EGEGKYRAEC  
KLDTKTGLRP DHRPDHKLGA KTQHRLLVVP ENENRMEDRL AETSRKADHH ISGAEVGKAS T

### General References

Kueng P, Nikolova Z, et al. (1997). J Cell Biol. 139(7):1851-9.

## DATA

### SDS-PAGE



3ug by SDS-PAGE under reducing condition and visualized by coomassie blue stain.