

Recombinant human CUEDC2 protein

Catalog Number: ATGP2299

PRODUCT INFORMATION

Expression system

E.coli

Domain

1-287aa

UniProt No.

Q9H467

NCBI Accession No.

NP_076945

Alternative Names

CuE domain-containing protein 2, bA18I14.5, C10orf66

PRODUCT SPECIFICATION

Molecular Weight

34.4 kDa (310aa) confirmed by MALDI-TOF

Concentration

1mg/ml (determined by Bradford assay)

Formulation

Liquid in. 20mM Tris-HCl buffer (pH 8.0) containing 0.15M NaCl, 20% glycerol, 1mM DTT

Purity

> 90% by SDS-PAGE

Tag

His-Tag

Application

SDS-PAGE

Storage Condition

Can be stored at +2C to +8C for 1 week. For long term storage, aliquot and store at -20C to -80C. Avoid repeated freezing and thawing cycles.

BACKGROUND

Description

CUEDC2 belongs to the CUEDC2 family and contains 1 CUE domain. This protein down-regulates ESR1 protein levels through the ubiquitination-proteasome pathway, regardless of the presence of 17 beta-estradiol. It also involves in 17 beta-estradiol-induced ESR1 degradation and controls PGR protein levels through a similar mechanism. Recombinant human CUEDC2 protein, fused to His-tag at N-terminus, was expressed in E. coli and purified by using conventional chromatography techniques.

Recombinant human CUEDC2 protein

Catalog Number: ATGP2299

Amino acid Sequence

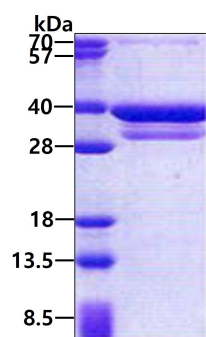
<MGSSHHHHH SSGLVPRGSH MGS>MELERIV SAALLAFVQT HLPEADLSGL DEVIFSYVLG VLEDLGPSGP
SEENFDMEAF TEMMEAYVPG FAHIPRGTIG DMMQKLSGQL SDARNKENLQ PQSSGVQGQV PISPEPLQRP EMLKEETRSS
AAAAADTQDE ATGAEELLP GVDVLEVP TCSVEQAQWV LAKARGDLEE AVQMLVEGKE EGPAAWEGPN QDLPRRLRGP
QKDELKSFIL QKYMVDSAE DQKIHRPMAP KEAPKILIRY IDNQVVSTKG ERFKDVNRPE AEEMKATYIN LKPARKYRFH

General References

Pan X, Zhou T, et al. (2011). Nat Med. 17(6):708-14.
Zhang PJ, Zhao J, et al. (2007). EMBO J. 26(7):1831-42.

DATA

SDS-PAGE



3 μ g by SDS-PAGE under reducing condition and visualized by coomassie blue stain.