

Recombinant human MRPS2 protein

Catalog Number: ATGP2301

PRODUCT INFORMATION

Expression system

E.coli

Domain

1-296aa

UniProt No.

Q9Y399

NCBI Accession No.

NP_057118

Alternative Names

Mitochondrial ribosomal protein S2, CGI-91, MRP-S2, S2mt

PRODUCT SPECIFICATION

Molecular Weight

35.6 kDa (319aa)

Concentration

1mg/ml (determined by Bradford assay)

Formulation

Liquid in. 20mM Tris-HCl buffer (pH 8.0) containing 10% glycerol

Purity

> 85% by SDS-PAGE

Tag

His-Tag

Application

SDS-PAGE

Storage Condition

Can be stored at +2C to +8C for 1 week. For long term storage, aliquot and store at -20C to -80C. Avoid repeated freezing and thawing cycles.

BACKGROUND

Description

Mammalian mitochondrial ribosomal proteins are encoded by nuclear genes and help in protein synthesis within the mitochondrion. Mitochondrial ribosomes (mitoribosomes) consist of a small 28S subunit and a large 39S subunit. They have an estimated 75% protein to rRNA composition compared to prokaryotic ribosomes, where this ratio is reversed. Another difference between mammalian mitoribosomes and prokaryotic ribosomes is that the latter contain a 5S rRNA. MRPS2 is a 28S subunit protein that belongs to the ribosomal protein S2 family. Recombinant human MRPS2 protein, fused to His-tag at N-terminus, was expressed in E. coli.

Recombinant human MRPS2 protein

Catalog Number: ATGP2301

Amino acid Sequence

MGSSHHHHHH SSGLVPRGSH MGSMATSSAA LPRILGAGAR APSRWLGFLG KATPRPARPS RRTLGSATAL MIRESEDSTD
FNDKILNEPL KHSDFFNVKE LFSVRSLEFDA RVHLGHKAGC RHRFMPEYIF GSRLDHDIID LEQTATHLQL ALNFTAHMAY
RKGIIIFISR NRQFSYLIEN MARDCGEYAH TRYFRGGMLT NARLLFGPTV RLPDLIIFLH TLNNIFEPHV AVRDAAKMNI
PTVGIVDTNC NPCLITYPVP GNDDSP LAVH LYCRLFQTAI TRAKEKRQV EALYRLQGQK EPGDQGPAHP PGADMHSLS

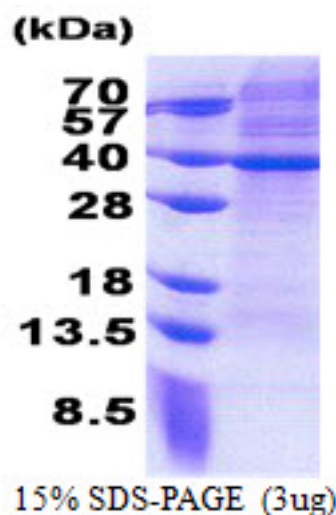
General References

Suzuki T., et al (2001). J. Biol. Chem. 276:33181-33195

Koc E.C., et al (2001). J. Biol. Chem. 276:19363-19374

DATA

SDS-PAGE



3ug by SDS-PAGE under reducing condition and visualized by coomassie blue stain.