

Recombinant human Follistatin-like 1 protein

Catalog Number: ATGP2302

PRODUCT INFORMATION

Expression system

E.coli

Domain

21-308aa

UniProt No.

Q12841

NCBI Accession No.

NP_009016.1

Alternative Names

follistatin-related protein 1, FRP, FSL1

PRODUCT SPECIFICATION

Molecular Weight

34.9 kDa (309aa) confirmed by MALDI-TOF

Concentration

0.5mg/ml (determined by Bradford assay)

Formulation

Liquid in. 20mM Tris-HCl buffer (pH 8.0) containing 0.15M NaCl, 20% glycerol, 1mM DTT

Purity

> 90% by SDS-PAGE

Tag

His-Tag

Application

SDS-PAGE

Storage Condition

Can be stored at +2C to +8C for 1 week. For long term storage, aliquot and store at -20C to -80C. Avoid repeated freezing and thawing cycles.

BACKGROUND

Description

FSTL1 is a protein with similarity to follistatin, an activin-binding protein. It contains an FS module, a follistatin-like sequence containing 10 conserved cysteine residues. This protein is thought to be an autoantigen associated with rheumatoid arthritis. Recombinant human FSTL1 protein, fused to His-tag at N-terminus, was expressed in E. coli and purified by using conventional chromatography techniques.

Amino acid Sequence

<MGSSHHHHHH SGLVPRGSH M>EEELRSKSK ICANVFCGAG RECAVTEKGE PTCLCIEQCK PHKRPVCGSN

Recombinant human Follistatin-like 1 protein

Catalog Number: ATGP2302

GKTYLNHCEL HRDACTGSK IQVDYDGHCK EKKSVPSPAS PVVCYQSNRD ELRRRIQWL EAEIIPDGWF SKGSNYSEIL
DKYFKNFDNG DSRLDSSEFL KFVEQNETAI NITYTPDQEN NKLLRGLCVD ALIELSDENA DWKLSFQEFL KCLNPSFNPP
EKKCALEDET YADGAETEVD CNRCVCACGN WVCTAMTCDG KNQKGAQTQT EEEMTRYVQE LQKHQETAEK TKRVSTKEI

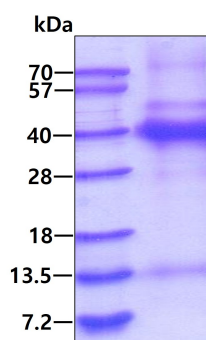
General References

Tanaka M., et al (1998). *Int. Immunol.* 10:1305-1314

Ehara Y., et al (2004). *Clin. Exp. Rheumatol.* 22:707-712

DATA

SDS-PAGE



3ug by SDS-PAGE under reducing condition and visualized by coomassie blue stain.