

# Recombinant human SPRY4 protein

Catalog Number: ATGP2326

## PRODUCT INFORMATION

---

### Expression system

E.coli

### Domain

1-299aa

### UniProt No.

Q9C004

### NCBI Accession No.

NP\_001120968

### Alternative Names

Protein sprouty homolog 4 isoform 2, Protein sprouty homolog 4 isoform 2, Sprouty homolog 4 (Drosophila)

## PRODUCT SPECIFICATION

---

### Molecular Weight

34.9 kDa (322aa)

### Concentration

1mg/ml (determined by Bradford assay)

### Formulation

Liquid in. 20mM Tris-HCl buffer (pH 8.0) containing 10% glycerol, 0.4M urea

### Purity

> 85% by SDS-PAGE

### Tag

His-Tag

### Application

SDS-PAGE, Denatured

### Storage Condition

Can be stored at +2C to +8C for 1 week. For long term storage, aliquot and store at -20C to -80C. Avoid repeated freezing and thawing cycles.

## BACKGROUND

---

### Description

SPRY4 is an inhibitor of the receptor-transduced mitogen-activated protein kinase (MAPK) signaling pathway. It is positioned upstream of RAS (see HRAS; MIM 190020) activation and impairs the formation of active GTP-RAS. Recombinant human SPRY4 protein, fused to His-tag at N-terminus, was expressed in E. coli.

### Amino acid Sequence

MGSSHHHHHH SGLVPRGSH MGSMEPIIQ SAPLTPNSVM VQPLLSRMS HSRLQHPLTI LPIDQVKTSV VENDYIDNPS  
LALTTGPKRT RGGAPLAPT PARCDQDVTH HWISFSGRPS SVSSSSSTSS DQRLLDHMAP PPVADQASPR AVRIQPKVVH

# Recombinant human SPRY4 protein

Catalog Number: ATGP2326

CQPLDLKGPA VPPELDKHFL LCEACGKCKC KECASPRTL P SCWVCNQECL CSAQTLVNYG TCMCLVQGIF YHCTNEDDEG  
SCADHPCSCS RSNCCARWSF MGALSVVLP C LLCYLPATGC VKLAQRGYDR LRRPGCRCKH TNSVICKAAS GDAKTSRDK  
PF

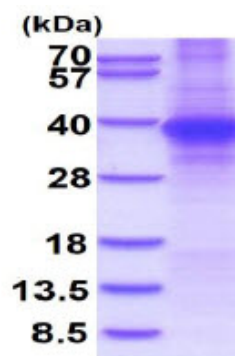
## General References

Katoh Y, Katoh M. (2006). Int J Mol Med 17 (3): 529-32

## DATA

---

### SDS-PAGE



15% SDS-PAGE (3ug)

3ug by SDS-PAGE under reducing condition and visualized by coomassie blue stain.