

Recombinant human EBNA1BP2 protein

Catalog Number: ATGP2329

PRODUCT INFORMATION

Expression system

E.coli

Domain

1-306aa

UniProt No.

Q99848

NCBI Accession No.

NP_006815

Alternative Names

Probable rRNA-processing protein EBP2 isoform 2, EBNA1 binding protein 2, EBP2, NOBP, P40

PRODUCT SPECIFICATION

Molecular Weight

37.2 kDa (329aa)

Concentration

0.5mg/ml (determined by Bradford assay)

Formulation

Liquid in. 20mM Tris-HCl buffer (pH 8.0) containing 10% glycerol, 0.4M urea

Purity

> 80% by SDS-PAGE

Tag

His-Tag

Application

SDS-PAGE, Denatured

Storage Condition

Can be stored at +2C to +8C for 1 week. For long term storage, aliquot and store at -20C to -80C. Avoid repeated freezing and thawing cycles.

BACKGROUND

Description

EBNA1BP2 belongs to the EBP2 family. This protein is required for the processing of the 27S pre-rRNA. It specifically interacts with EBV EBNA1 and the EBNA1-EBP2 interaction is important for the stable segregation of EBV episomes during cell division. Recombinant human EBNA1BP2 protein, fused to His-tag at N-terminus, was expressed in E. coli.

Amino acid Sequence

MGSSHHHHHHH SGLVPRGSH MGSMDTPPLS DSESEDES L VTDRELQDAF SRGLLKPLGN VVLEGPKKAV NDVNLKQCL

Recombinant human EBNA1BP2 protein

Catalog Number: ATGP2329

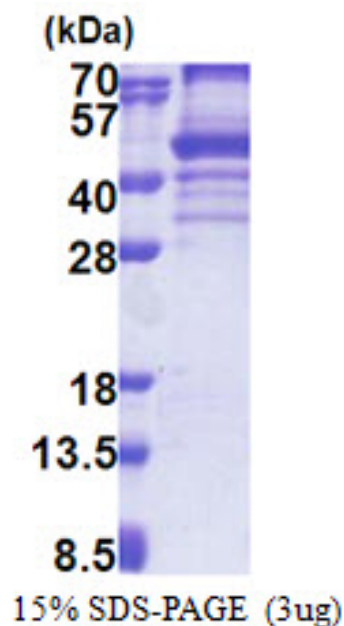
AEFKRDLEWV ERLDVTLGVPV PEIGGSEAPA PQNKDQKAVD PEDDFQREMS FYRQAQA AVL LPRRLHQLK VPTKRPTDYF
AEMA KSDLQM QKIRQKLQTK QAAMERSEKA KQLRALRKYG KKVQTEVLQK RQEKAHMMN AIKKYQKGFS DKLDFLEGDQ
KPLAQRKKAG AKGQQMRKGP SAKRRYKNQK FGFGGKKKGS KWNTRSYDD VSSFRAKTAH GRGLKRP GKK
GSNKRPGKRT REKMKNRTH

General References

Shire K., et al. (1999). J Virol 73 (4): 2587-95.

DATA

SDS-PAGE



3ug by SDS-PAGE under reducing condition and visualized by coomassie blue stain.