

# Recombinant human TFPI protein

Catalog Number: ATGP2333

## PRODUCT INFORMATION

---

### Expression system

E.coli

### Domain

29-304aa

### UniProt No.

P10646

### NCBI Accession No.

NP\_006278

### Alternative Names

tissue factor pathway inhibitor, EPI, LACI, TFI, TFPI1

## PRODUCT SPECIFICATION

---

### Molecular Weight

34.3 kDa (299aa)

### Concentration

1mg/ml (determined by Bradford assay)

### Formulation

Liquid in. 20mM Tris-HCl buffer (pH 8.0) containing 0.4M uREA, 10% glycerol

### Purity

> 85% by SDS-PAGE

### Tag

His-Tag

### Application

SDS-PAGE, Denatured

### Storage Condition

Can be stored at +2C to +8C for 1 week. For long term storage, aliquot and store at -20C to -80C. Avoid repeated freezing and thawing cycles.

## BACKGROUND

---

### Description

TFPI is a protease inhibitor that regulates the tissue factor (TF) -dependent pathway of blood coagulation. The coagulation process initiates with the formation of a factor VIIa-TF complex, which proteolytically activates additional proteases (factors IX and X) and ultimately leads to the formation of a fibrin clot. The protein inhibits the activated factor X and VIIa-TF proteases in an autoregulatory loop. TFPI is glycosylated and predominantly found in the vascular endothelium and plasma in both free forms and complexed with plasma lipoproteins. Several alternatively spliced transcript variants of this gene have been described, but the full-length nature of

# Recombinant human TFPI protein

Catalog Number: ATGP2333

some of these variants has not been confirmed. Recombinant human TFPI protein, fused to His-tag at N-terminus, was expressed in E. coli and purified by using conventional chromatography techniques.

## Amino acid Sequence

<MGSSHHHHHH SSGLVPRGSH MGS>DSEEDDEE HTIITDTELP PLKLMHSFCA FKADDGPCKA IMKRFFFNIF TRQCEEFYIG  
GCEGNQNRFE SLEECKKMCT RDNANRIIKT TLQKEKPDFC FLEEDPGICR GYITRYFYNN QTKQCERFKY GGCLGNMNNF  
ETLEECKNIC EDGPNGFQVD NYGTQLNAVN NSLTPQSTKV PSLFEFHGPS WCLTPADRGL CRANENRFYY NSVIGKCRPF  
KYSGCGGNEN NFTSKQECLR ACKKGFQRI SKGGLIKTKR KRKKQRVKIA YEEIFVKNM

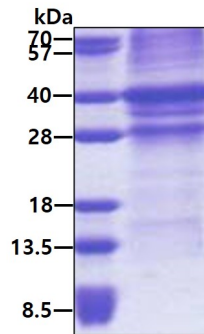
## General References

Prabhakar,P., et al. (2012) Thromb. Res. 130 (4), 687-689

Alioglu,B., et al. (2012) J Clin Res Pediatr Endocrinol 4 (3), 146-150

## DATA

### SDS-PAGE



3ug by SDS-PAGE under reducing condition and visualized by coomassie blue stain.