

Recombinant human TIPIN protein

Catalog Number: ATGP2342

PRODUCT INFORMATION

Expression system

E.coli

Domain

1-301aa

UniProt No.

Q9BVW5

NCBI Accession No.

NP_060328

Alternative Names

TIMELESS interacting protein, TIMELESS-interacting protein

PRODUCT SPECIFICATION

Molecular Weight

36.9 kDa (324aa) confirmed by MALDI-TOF (Molecular weight on SDS-PAGE will appear higher)

Concentration

0.5mg/ml (determined by Bradford assay)

Formulation

Liquid in. Phosphate-Buffered Saline (pH 7.4) containing 10% glycerol

Purity

> 85% by SDS-PAGE

Tag

His-Tag

Application

SDS-PAGE

Storage Condition

Can be stored at +2C to +8C for 1 week. For long term storage, aliquot and store at -20C to -80C. Avoid repeated freezing and thawing cycles.

BACKGROUND

Description

TIPIN belongs to the CSM3 family. This protein is required for normal progression of S-phase and important for cell survival after DNA damage or replication stress. TIPIN may be specifically required for the ATR-CHEK1 pathway in the replication checkpoint induced by hydroxyurea or ultraviolet light. Recombinant human TIPIN, fused to His-tag at N-terminus, was expressed in E. coli and purified by using conventional chromatography techniques.

Recombinant human TIPIN protein

Catalog Number: ATGP2342

Amino acid Sequence

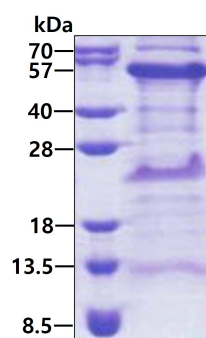
<MGSSHHHHHH SSGLVPRGSH MGS>MLEPQEN GVIDLPDYEH VEDETFPPFP PPASPERQDG EGTEPDEESG
NGAPVPVPPK RTVKRNIPKL DAQRLISERG LPALRHVFDK AKFKGKGHEA EDLKMLIRHM EHWAHRLFPK LQFEDFIDRV
EYLGSKKEVQ TCLKRIRLDL PILHEDFVSN NDEVAENNEH DVTSTELDPF LTNLSESEMF ASELRSRSLTE EQQRIERNK
QLALERRQAK LLSNSQTLGN DMLMNTPRAH TVEEVNTDED QKEESNGLNE DILDNPCNDA IANTLNEEET LLDQSFKNVQ
QLDATSRNI TEAR

General References

Dheekollu, J., et al. (2011) J. Virol. 85 (12), 5853-5863
Kemp, M.G., et al. (2010) J. Biol. Chem. 285 (22), 16562-16571

DATA

SDS-PAGE



3 μ g by SDS-PAGE under reducing condition and visualized by coomassie blue stain.