

Recombinant human KHDC1L protein

Catalog Number: ATGP2355

PRODUCT INFORMATION

Expression system

E.coli

Domain

1-128aa

UniProt No.

Q5JSQ8

NCBI Accession No.

NP_001119535

Alternative Names

KH homology domain containing 1-like, RP11-257K9.7

PRODUCT SPECIFICATION

Molecular Weight

16.9 kDa (151aa) confirmed by MALDI-TOF

Concentration

0.25mg/ml (determined by Bradford assay)

Formulation

Liquid in. 20mM Tris-HCl buffer (pH 8.0) containing 0.2M NaCl, 50% glycerol, 2mM DTT

Purity

> 90% by SDS-PAGE

Tag

His-Tag

Application

SDS-PAGE

Storage Condition

Can be stored at +2C to +8C for 1 week. For long term storage, aliquot and store at -20C to -80C. Avoid repeated freezing and thawing cycles.

BACKGROUND

Description

KHDC1L, also known as KH homology domain containing 1-like, belongs to the KHDC1 family. Recombinant human KHDC1L protein, fused to His-tag at N-terminus, was expressed in E. coli and purified by using conventional chromatography techniques.

Amino acid Sequence

MGSSHHHHHH SGLVPRGSH MGSMVGTSA LSKEPWWTLP ENFHSPMVFH MEEDQEELIF GLDDTYLRCI ELHSHTLIQL
ERCFTATGQT RVTVVGPPMA KQWLLLMFHC VGSQDSKCHA RGLKMLERVR SQPLTNDLVL TSVSLPPYTG D

Recombinant human KHDC1L protein

Catalog Number: ATGP2355

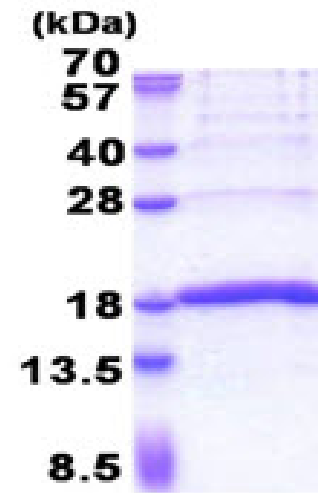
General References

Mungall A.J., et al. (2003) Nature. 425:805-811

The MGC Project Team. (2004) Genome Res. 14:2121-2127

DATA

SDS-PAGE



3ug by SDS-PAGE under reducing condition and visualized by coomassie blue stain.

15% SDS-PAGE (3ug)