

Recombinant human PRRX1 protein

Catalog Number: ATGP2368

PRODUCT INFORMATION

Expression system

E.coli

Domain

1-217aa

UniProt No.

P54821

NCBI Accession No.

NP_008833

Alternative Names

Paired related homeobox 1, AGOTC, PHOX1, PMX1, PRX-1, PRX1

PRODUCT SPECIFICATION

Molecular Weight

26.9 kDa (241aa) confirmed by MALDI-TOF (Molecular weight on SDS-PAGE will appear higher)

Concentration

0.25mg/ml (determined by Bradford assay)

Formulation

Liquid in. 20mM Tris-HCl buffer (pH 8.0) containing 0.2M NaCl, 50% glycerol, 2mM DTT

Purity

> 85% by SDS-PAGE

Tag

His-Tag

Application

SDS-PAGE

Storage Condition

Can be stored at +2C to +8C for 1 week. For long term storage, aliquot and store at -20C to -80C. Avoid repeated freezing and thawing cycles.

BACKGROUND

Description

Paired related homeobox 1, also known as PRRX1, acts as a transcriptional regulator of muscle creatine kinase (MCK) and so has a role in the establishment of diverse mesodermal muscle types. The protein binds to an A/T-rich element in the muscle creatine enhancer. Recombinant human PRRX1 protein, fused to His-tag at N-terminus, was expressed in E. coli and purified by using conventional chromatography techniques.

Amino acid Sequence

MGSSHHHHHH SGLVPRGSH MGSHTSSYG HVLERQPALG GRLDSPGNLD TLQAKKNFSV SHLLDLEEAG

Recombinant human PRRX1 protein

Catalog Number: ATGP2368

DMVAAQADEN VGEAGRSLLE SPGLTSGSDT PQQDNDQLNS EEKPKRKQRR NRTTFNSSLQ QALERVFERT HYPDAFVRED
LARRVNLTEA RVQVWFQNRK AKFRRNERAM LANKNASLLK SYSGDVTAVE QPIVPRPAPR PTDYLSWGTA SPYRSSLPR
CCLHEGLHNG F

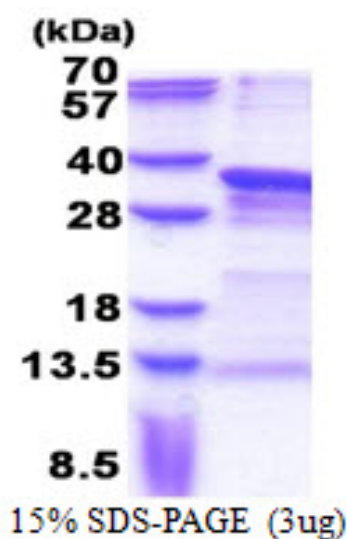
General References

Grueneberg D.A., et al. (1992) Science. 257:1089-1095

Sergi C., et al. (2011) Clin. Genet. 79:293-295

DATA

SDS-PAGE



3ug by SDS-PAGE under reducing condition and visualized by coomassie blue stain.