

Recombinant human LBH protein

Catalog Number: ATGP2373

PRODUCT INFORMATION

Expression system

E.coli

Domain

1-105aa

UniProt No.

Q53QV2

NCBI Accession No.

NP_112177

Alternative Names

Protein LBH, Limb bud and heart development

PRODUCT SPECIFICATION

Molecular Weight

14.6 kDa (128aa) confirmed by MALDI-TOF

Concentration

0.25mg/ml (determined by Bradford assay)

Formulation

Liquid in. 20mM Tris-HCl buffer (pH 8.0) containing 20% glycerol, 0.15M NaCl, 1mM DTT

Purity

> 90% by SDS-PAGE

Tag

His-Tag

Application

SDS-PAGE

Storage Condition

Can be stored at +2C to +8C for 1 week. For long term storage, aliquot and store at -20C to -80C. Avoid repeated freezing and thawing cycles.

BACKGROUND

Description

LBH belongs to the LBH family and is highly expressed in heart, and expressed at low levels in placenta, lung, skeletal muscle, kidney and liver. This protein is a transcriptional activator which may act in mitogen-activated protein kinase signaling pathway. Recombinant human LBH protein, fused to His-tag at N-terminus, was expressed in E. coli and purified by using conventional chromatography techniques.

Amino acid Sequence

MGSSHHHHHH SGLVPRGSH MGSMSIYFPI HCPDYLRSAK MTEVMMNTQP MEEIGLSPRK DGLSYQIFPD PSDFDRCKL

Recombinant human LBH protein

Catalog Number: ATGP2373

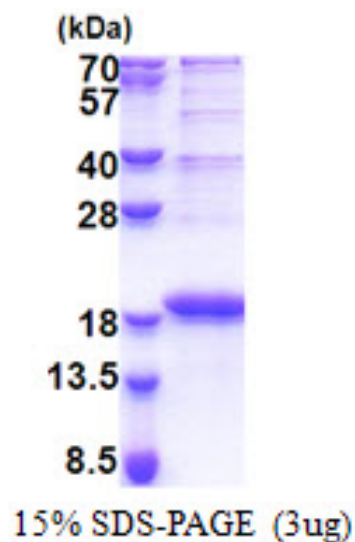
KDRLPSIVVE PTEGEVESGE LRWPPEEFLV QEDEQDNCEE TAKENKEQ

General References

Ai J., Wang Y., et al. (2008) Mol. Biol. Rep. 35:179-187

DATA

SDS-PAGE



3ug by SDS-PAGE under reducing condition and visualized by coomassie blue stain.