

Recombinant human MTCP1 protein

Catalog Number: ATGP2402

PRODUCT INFORMATION

Expression system

E.coli

Domain

1-107aa

UniProt No.

P56278

NCBI Accession No.

NP_001018025

Alternative Names

Mature T-cell proliferation 1, P13MTCP1, p8MTCP1

PRODUCT SPECIFICATION

Molecular Weight

15 kDa (130aa) confirmed by MALDI-TOF

Concentration

1mg/ml (determined by Bradford assay)

Formulation

Liquid in. 20mM Tris-HCl buffer (pH 8.0) containing 0.15M NaCl, 10% glycerol, 1mM DTT

Purity

> 95% by SDS-PAGE

Tag

His-Tag

Application

SDS-PAGE

Storage Condition

Can be stored at +2C to +8C for 1 week. For long term storage, aliquot and store at -20C to -80C. Avoid repeated freezing and thawing cycles.

BACKGROUND

Description

MTCP1 was identified by involvement in some t (X;14) translocations associated with mature T-cell proliferations. This region has a complex gene structure, with a common promoter and 5' exon spliced to two different sets of 3' exons that encode two different proteins. It represents the upstream 13 kDa protein that is a member of the TCL1 family. MTCP1 may be involved in leukemogenesis. Recombinant human MTCP1 protein, fused to His-tag at N-terminus, was expressed in E. coli and purified by using conventional chromatography techniques.

Recombinant human MTCP1 protein

Catalog Number: ATGP2402

Amino acid Sequence

MGSSHHHHHH SGLVPRGSH MGSMAGEDVG APPDHLWVHQ EGIYRDEYQR TWVAVVEEET SFLRARVQQI
QVPLGDAARP SHLLTSQLPL MWQLYPEERY MDNNSRLWQI QHHLMVRGVQ ELLKLLPDD

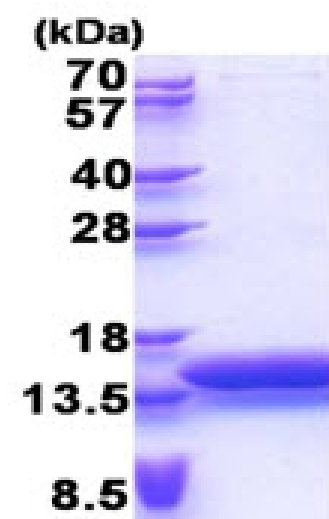
General References

Laine J., et al. (2000) Mol. Cell. 6:395-407

Laine J., et al. (2002) J. Biol. Chem. 277:3743-3751

DATA

SDS-PAGE



3ug by SDS-PAGE under reducing condition and visualized by coomassie blue stain.

15% SDS-PAGE (3ug)