

Recombinant human TCL1B protein

Catalog Number: ATGP2403

PRODUCT INFORMATION

Expression system

E.coli

Domain

1-128aa

UniProt No.

O95988

NCBI Accession No.

NP_004909

Alternative Names

T-cell leukemia/lymphoma 1B, T-cell leukemia/lymphoma 1B, SYN-1, TML1

PRODUCT SPECIFICATION

Molecular Weight

17.2 kDa (151aa) confirmed by MALDI-TOF

Concentration

0.5mg/ml (determined by Bradford assay)

Formulation

Liquid in. 20mM Tris-HCl buffer (pH 8.0) containing 0.2M NaCl, 40% glycerol, 2mM DTT

Purity

> 95% by SDS-PAGE

Tag

His-Tag

Application

SDS-PAGE

Storage Condition

Can be stored at +2C to +8C for 1 week. For long term storage, aliquot and store at -20C to -80C. Avoid repeated freezing and thawing cycles.

BACKGROUND

Description

TCL1B belongs to the TCL1 family and is expressed in a variety of tissues including placenta and testis. This protein enhances the phosphorylation and activation of AKT1 and AKT2. Recombinant human TCL1B protein, fused to His-tag at N-terminus, was expressed in E. coli and purified by using conventional chromatography techniques.

Amino acid Sequence

MGSSHHHHHH SGLVPRGSH MGSMAEASV RLGVPGRRLW IQRPGIYEDE EGRTWVTVVV RFNPSRREWA

Recombinant human TCL1B protein

Catalog Number: ATGP2403

RASQGSRYEP SITVHLWQMA VHTRELLSSG QMPFSQLPAV WQLYPGRKYR AADSSFWEIA DHGQIDSMEQ LVLTYQPERK
D

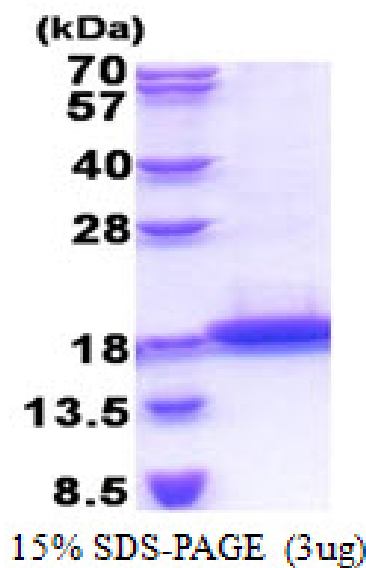
General References

Laine J., et al. (2000) Mol. Cell. 6:395-407

Laine J., et al. (2002) J. Biol. Chem. 277:3743-3751

DATA

SDS-PAGE



3ug by SDS-PAGE under reducing condition and visualized by coomassie blue stain.