

Recombinant human MPPED2 protein

Catalog Number: ATGP2408

PRODUCT INFORMATION

Expression system

E.coli

Domain

1-294aa

UniProt No.

Q15777

NCBI Accession No.

NP_001575

Alternative Names

metallophosphoesterase MPPED2 isoform 1, metallophosphoesterase MPPED2 isoform 1, 239FB, C11orf8

PRODUCT SPECIFICATION

Molecular Weight

35.7 kDa (317aa) confirmed by MALDI-TOF

Concentration

0.25mg/ml (determined by Bradford assay)

Formulation

Liquid in. 20mM Tris-HCl buffer (pH 8.0) containing 0.15M NaCl, 10% glycerol, 1mM DTT

Purity

> 85% by SDS-PAGE

Tag

His-Tag

Application

SDS-PAGE

Storage Condition

Can be stored at +2C to +8C for 1 week. For long term storage, aliquot and store at -20C to -80C. Avoid repeated freezing and thawing cycles.

BACKGROUND

Description

MPPED2 likely encodes a metallophosphoesterase. The protein may play a role a brain development. Alternatively spliced transcript variants have been described. Recombinant human MPPED2 protein, fused to His-tag at N-terminus, was expressed in E. coli and purified by using conventional chromatography techniques.

Amino acid Sequence

MGSSHHHHHH SGLVPRGSH MGSMAHGIPS QGKVTITVDE YSSNPTQAFH HYNINQSRFQ PPHVHMVDPI PYDTPKPAGH TRFVCISDTH SRTDGIQMPY GDILLHTGDF TELGLPSEVK KFNDWLG NLP YEYKIVIAGN HELTFDKEFM ADLVKQDYR

Recombinant human MPPED2 protein

Catalog Number: ATGP2408

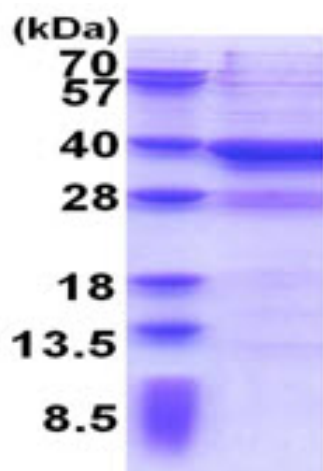
FPSVSKLKPE DFDNVQSLLT NSIYLQDSEV TVKGFRIYGA PWTPWFNGWG FNLPRGQSLL DKWNLIPEGI DILMTHGPPL
GFRDWVPKEL QRVGCVELLN TVQRRVRPKL HVFGGIHEGY GIMTDGYTTY INASTCTVSF QPTNPPIIFD LPNPQGS

General References

Liguori,L., et al. (2012) Cell Cycle 11 (3), 569-581
Dermol,u., et al. (2011) J. Mol. Biol. 412 (3), 481-494

DATA

SDS-PAGE



15% SDS-PAGE (3ug)

3ug by SDS-PAGE under reducing condition and visualized by coomassie blue stain.