

Recombinant human MAGEB10 protein

Catalog Number: ATGP2409

PRODUCT INFORMATION

Expression system

E.coli

Domain

1-347aa

UniProt No.

Q96LZ2

NCBI Accession No.

NP_872312

Alternative Names

Melanoma-associated antigen B10, melanoma antigen family B 10, FLJ32965, MAGE-B10 antigen, Melanoma-associated antigen B10

PRODUCT SPECIFICATION

Molecular Weight

41.4 kDa (370aa) confirmed by MALDI-TOF

Concentration

0.25mg/ml (determined by Bradford assay)

Formulation

Liquid in. 20mM Tris-HCl buffer (pH 8.0) containing 0.15M NaCl, 10% glycerol, 1mM DTT, 0.1mM PMSF

Purity

> 85% by SDS-PAGE

Tag

His-Tag

Application

SDS-PAGE

Storage Condition

Can be stored at +2C to +8C for 1 week. For long term storage, aliquot and store at -20C to -80C. Avoid repeated freezing and thawing cycles.

BACKGROUND

Description

MAGEB10 is a member of the B subfamily of the melanoma associated antigen protein family. The protein is specifically expressed in testis and tumor cells. Recombinant human MAGEB10 protein, fused to His-tag at N-terminus, was expressed in E. coli and purified by using conventional chromatography techniques.

Amino acid Sequence

MGSSHHHHHH SGLVPRGSH MGSMPRGQKS KLRAREKRRQ ARGGLEDLID ALDILEEEEE SPPSASACKL DVFQSSLDGA

Recombinant human MAGEB10 protein

Catalog Number: ATGP2409

SNNPHGLREA QSTSTSATAA SHTRHPEGVN DQMEERPICT QDLEATDSFP RGPVDEKVII LVHYLLYKYQ MKEPITKADM
LRNVTQMSKS QFPVILSRAS EHLELIFGLD LKEVEPNKHI YVLVNKLDLG CDAKLSDETG VPKTGLLMTV LGIIFTNGNC
VAEEEEVWKVF NTMGLYDGIE HFMFGEPRLK LTKDLVKENY LEYQQVPNSD PPRYQFLWGP RAHAETSKMK VLEFLAKVND
TAPSEFSNWY TEALQDEEER ARARVAAKAR VSATAGARSK VKSSKSSQLQ

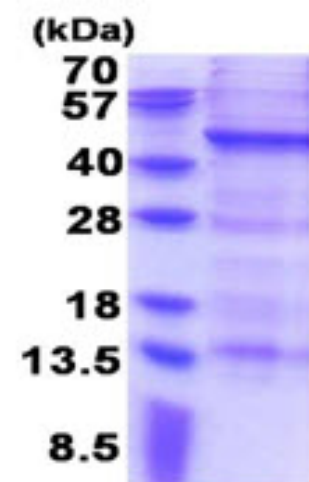
General References

Ota T., et al. (2004) Nat. Genet. 36:40-45

Ross M.T., et al. (2005) Nature. 434:325-337

DATA

SDS-PAGE



3ug by SDS-PAGE under reducing condition and visualized by coomassie blue stain.

15% SDS-PAGE (3ug)