

Recombinant human DNALI1 protein

Catalog Number: ATGP2410

PRODUCT INFORMATION

Expression system

E.coli

Domain

1-280aa

UniProt No.

O14645

NCBI Accession No.

NP_003453

Alternative Names

axonemal dynein light intermediate polypeptide 1, dj423B22.5, hp28, P28

PRODUCT SPECIFICATION

Molecular Weight

34.2 kDa (303aa) confirmed by MALDI-TOF

Concentration

1mg/ml (determined by Bradford assay)

Formulation

Liquid in. 20mM Tris-HCl buffer (pH 8.0) containing 0.15M NaCl, 10% glycerol, 1mM DTT, 0.1mM PMSF

Purity

> 90% by SDS-PAGE

Tag

His-Tag

Application

SDS-PAGE

Storage Condition

Can be stored at +2C to +8C for 1 week. For long term storage, aliquot and store at -20C to -80C. Avoid repeated freezing and thawing cycles.

BACKGROUND

Description

DNALI1 is the human homolog of the Chlamydomonas inner dynein arm gene, p28. The precise function of this gene is not known, however, it is a potential candidate for immotile cilia syndrome (ICS). Ultrastructural defects of the inner dynein arms are seen in patients with ICS. Immotile mutant strains of Chlamydomonas, a biflagellated algae, exhibit similar defects. Recombinant human DNALI1 protein, fused to His-tag at N-terminus, was expressed in E. coli and purified by using conventional chromatography techniques.

Recombinant human DNALI1 protein

Catalog Number: ATGP2410

Amino acid Sequence

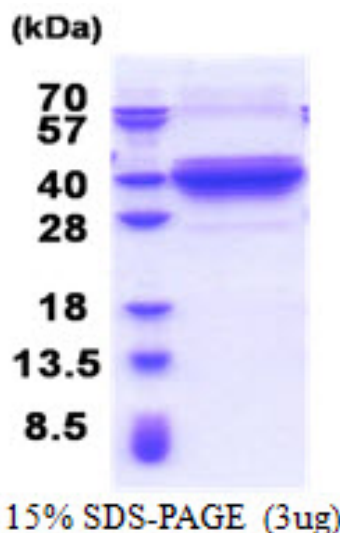
MGSSHHHHHH SSGLVPRGSH MGSMVTANKA HTGQGSCWVA TLASAMIPPA DSLLKYDTPV LVS RNTEKRS PKARLLKVSP
QQPGPSGSAP QPPKTKLPST PCVPDPTKQA EEILNAILPP REWVEDTQLW IQQVSSTPST RMDVVHLQEQ LDLKLQQRQA
RETGICPVRR ELYSQCFDEL IREVTINCAE RGLLLLVRVD EIRMTIAAYQ TLYESSVAFG MRKALQAEQG KSDMERKIAE
LETEKRDLER QVNEQKAKCE ATEKRESERR QVEEKHNEE IQFLKRTNQQ LKAQLEGIIA PPK

General References

Kastury K., et al (1997). *Biochem. J. Clin. Endocrinol. Metab.* 82:3047-3053
Sjoebloom T., et al (2006). *Science* 314:268-274(2006)

DATA

SDS-PAGE



3ug by SDS-PAGE under reducing condition and visualized by coomassie blue stain.