

# Recombinant human TBC1D1 protein

Catalog Number: ATGP2412

## PRODUCT INFORMATION

---

### Expression system

E.coli

### Domain

1-265aa

### UniProt No.

Q8NC59

### NCBI Accession No.

NP\_001240842

### Alternative Names

TBC1 (tre-2/uSP6 BuB2 cdc16) domain family member 1, TBC1 (tre-2/uSP6, BuB2, cdc16) domain family, member 1, TBC, TBC1

## PRODUCT SPECIFICATION

---

### Molecular Weight

33.2 kDa (288aa)

### Concentration

1mg/ml (determined by Bradford assay)

### Formulation

Liquid in. 20mM Tris-HCl buffer (pH 8.0) containing 10% glycerol 0.4M urea

### Purity

> 90% by SDS-PAGE

### Tag

His-Tag

### Application

SDS-PAGE, Denatured

### Storage Condition

Can be stored at +2C to +8C for 1 week. For long term storage, aliquot and store at -20C to -80C. Avoid repeated freezing and thawing cycles.

## BACKGROUND

---

### Description

TBC1 (tre-2/uSP6, BuB2, cdc16) domain family, member 1, also known as TBC1D1, may act as a GTPase-activating protein for Rab family protein (s). This protein may play a role in the cell cycle and differentiation of various tissues. This protein is involved in the trafficking and translocation of GLuT4-containing vesicles and insulin-stimulated glucose uptake into cells. Recombinant human TBC1D1 protein, fused to His-tag at N-terminus, was expressed in E. coli.

## Recombinant human TBC1D1 protein

Catalog Number: ATGP2412

### Amino acid Sequence

MGSSHHHHHH SSSLVPRGSH MGSMSEEEAF KMLKFLMFDM GLRKQYRPDM IILQIQMYQL SLLLDYHRD LYNHLEEHEI  
GPSLYAAPWF LTMFASQFPL GFVARVFDMI FLQGTEVIFK VALSLLGSHK PLILQHENLE TIVDFIKSTL PNLGLVQMEK  
TINQVFEMDI AKQLQAYEVE YHVLQEELID SSPLSDNQRM DKLEKTNSSL RKQNLDLLEQ LQVANGRIQS LEATIEKLLS  
SESKLKQAML TLELERSALL QTVEELRRRS AEPDREPEC TQPEPTGD

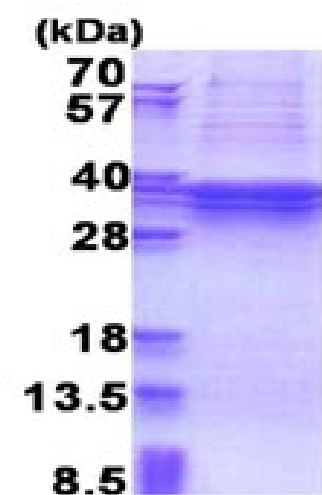
### General References

Stone S., et al. (2006) Hum. Mol. Genet. 15:2709-2720

Meyre D., et al. (2008) Hum. Mol. Genet. 17:1798-1802

## DATA

### SDS-PAGE



3ug by SDS-PAGE under reducing condition and visualized by coomassie blue stain.

15% SDS-PAGE (3ug)