

Recombinant human PMF1-BGLAP protein

Catalog Number: ATGP2417

PRODUCT INFORMATION

Expression system

E.coli

Domain

1-211aa

UniProt No.

U3KQ54

NCBI Accession No.

NP_001186591

Alternative Names

PMF1-BGLAP protein isoform 2, PMF1-BGLAP readthrough

PRODUCT SPECIFICATION

Molecular Weight

26.2 kDa (234aa)

Concentration

1mg/ml (determined by Bradford assay)

Formulation

Liquid in. 20mM Tris-HCl buffer (pH 8.0) containing 10% glycerol 0.4M urea

Purity

> 85% by SDS-PAGE

Tag

His-Tag

Application

SDS-PAGE, Denatured

Storage Condition

Can be stored at +2C to +8C for 1 week. For long term storage, aliquot and store at -20C to -80C. Avoid repeated freezing and thawing cycles.

BACKGROUND

Description

This locus represents naturally occurring read-through transcription between the neighboring PMF1 (polyamine-modulated factor 1) and BGLAP (bone gamma-carboxyglutamate Gla protein) genes on chromosome 1. Alternative splicing results in multiple transcript variants encoding isoforms that share sequence identity with the upstream gene product, but they contain distinct C-termini due to frameshifts versus the downstream gene coding sequence. Recombinant human PMF1-BGLAP protein, fused to His-tag at N-terminus, was expressed in E. coli.

Recombinant human PMF1-BGLAP protein

Catalog Number: ATGP2417

Amino acid Sequence

MGSSHHHHHH SSSLVPRGSH MGSMAEASSA NLGSGCEEKR HEGSSSESVP PGTISRVLK LDTMVDTFLO KLVAAGSYQR
FTDCYKCFYQ LQPAMTQQIY DKFIAQLQTS IREEISDIKE EGNLEAVLNA LDKIVEEGKV RKEPAWRPSG IPEKDLHSVM
APYFLQQRDT LRRHVQKQEA ENQLADAVL AGRRQVEELQ LQVQAQQAW QVRSPAVQSP AKVQPLCPSR RAAR

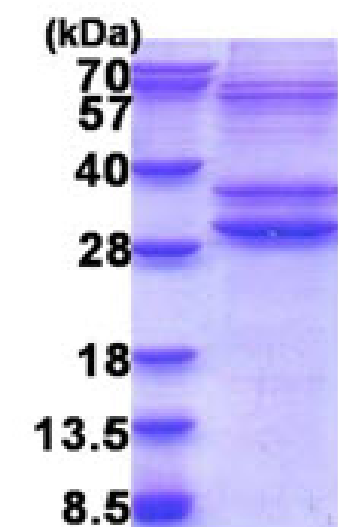
General References

udeshi ND. et al. (2012) Mol Cell Proteomics. 11:148-159.

Strausberg RL. et al. (2002) Proc Natl Acad Sci u S A. 99:16899-16903

DATA

SDS-PAGE



3ug by SDS-PAGE under reducing condition and visualized by coomassie blue stain.

15% SDS-PAGE (3ug)