

Recombinant human RPL31 protein

Catalog Number: ATGP2433

PRODUCT INFORMATION

Expression system

E.coli

Domain

1-125aa

UniProt No.

P62899

NCBI Accession No.

NP_000984

Alternative Names

60S ribosomal protein L31 isoform 1, L31

PRODUCT SPECIFICATION

Molecular Weight

16.9 kDa (148aa) confirmed by MALDI-TOF

Concentration

0.25mg/ml (determined by Bradford assay)

Formulation

Liquid in. 20mM Tris-HCl buffer (pH 8.0) containing 0.2M NaCl, 50% glycerol, 1mM DTT

Purity

> 85% by SDS-PAGE

Tag

His-Tag

Application

SDS-PAGE

Storage Condition

Can be stored at +2C to +8C for 1 week. For long term storage, aliquot and store at -20C to -80C. Avoid repeated freezing and thawing cycles.

BACKGROUND

Description

Ribosomes, the organelles that catalyze protein synthesis, consist of a small 40S subunit and a large 60S subunit. Together these subunits are composed of 4 RNA species and approximately 80 structurally distinct proteins. This gene encodes a ribosomal protein that is a component of the 60S subunit. The protein belongs to the L31E family of ribosomal proteins. It is located in the cytoplasm. Higher levels of expression of this gene in familial adenomatous polyps compared to matched normal tissues have been observed. As is typical for genes encoding ribosomal proteins, there are multiple processed pseudogenes of this gene dispersed through the

Recombinant human RPL31 protein

Catalog Number: ATGP2433

genome. Recombinant human RPL31 protein, fused to His-tag at N-terminus, was expressed in *E. coli* and purified by using conventional chromatography techniques.

Amino acid Sequence

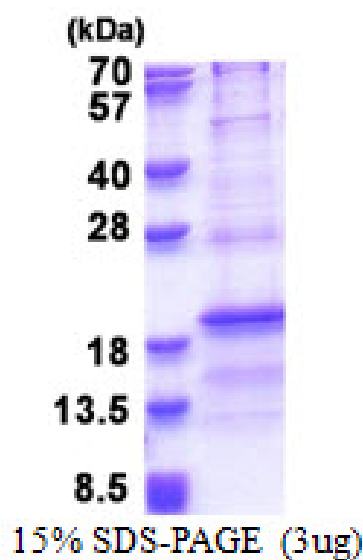
MGSSHHHHHH SGLVPRGSH MGSMAPAKKG GEKKKGRSAI NEVVTREYTI NIHKRIHGVG FKKRAPRALK EIRKFAMKEM
GTPDVRIDTR LNKAVWAKGI RNVPYRIRVR LSRKRNEDED SPNKLYTLVT YVPVTTFKNL QTVNVN DEN

General References

Ewing RM, Chu P, et al. (2007). *Mol Syst Biol.* 3:89.

DATA

SDS-PAGE



3ug by SDS-PAGE under reducing condition and visualized by coomassie blue stain.