

# Recombinant human PP1 Inhibitor-2 protein

Catalog Number: ATGP2438

## PRODUCT INFORMATION

---

### Expression system

E.coli

### Domain

1-166aa

### UniProt No.

P41236

### NCBI Accession No.

NP\_006232

### Alternative Names

Protein phosphatase inhibitor 2, Protein phosphatase 1, regulatory (inhibitor) subunit 2, IPP-2; IPP2, PPP1R2

## PRODUCT SPECIFICATION

---

### Molecular Weight

21 kDa (189aa) confirmed by MALDI-TOF

### Concentration

0.25mg/ml (determined by Bradford assay)

### Formulation

Liquid in. 20mM Tris-HCl buffer (pH 8.0) containing 30% glycerol, 0.15M NaCl, 1mM DTT

### Purity

> 85% by SDS-PAGE

### Tag

His-Tag

### Application

SDS-PAGE

### Storage Condition

Can be stored at +2C to +8C for 1 week. For long term storage, aliquot and store at -20C to -80C. Avoid repeated freezing and thawing cycles.

## BACKGROUND

---

### Description

PPP1R2 is an inhibitor of protein-phosphatase 1 and forms heterodimer with PP1. Phosphorylation on Thr-73 by GSK3 activates PP1 by dissociating the PP1-PPP1R2 complex. Phosphorylation on Ser-44 by ATM activates PP1 by dissociating the PP1-PPP1R2 complex. Recombinant human PPP1R2 protein, fused to His-tag at N-terminus, was expressed in E. coli and purified by using conventional chromatography techniques.

### Amino acid Sequence

MGSSHHHHHH SGLVPRGSH MGSMAASTAS HRPIKGILKN KTSTSSMVA SAEQPRGNVD EELSKKSQKW DEMNILATYH

# Recombinant human PP1 Inhibitor-2 protein

Catalog Number: ATGP2438

PADKDYGLMK IDEPSTPYHS MMGDDEDACS DTEATEAMAP DILARKLAAA EGGLEPKYRIQ EQESSGEEDS DLSPEEREKK  
RQFEMKRRLH YNEGLNIKLA RQLISKDLH

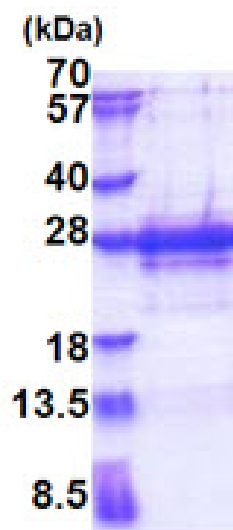
## General References

Sanseau P., Jackson A, et al. (1994), Genome 5:490-496

## DATA

---

### SDS-PAGE



3ug by SDS-PAGE under reducing condition and visualized by coomassie blue stain.

15% SDS-PAGE (3ug)