

Recombinant human BCL7C protein

Catalog Number: ATGP2446

PRODUCT INFORMATION

Expression system

E.coli

Domain

1-217aa

UniProt No.

Q8WUZ0

NCBI Accession No.

NP_004756

Alternative Names

B-cell CLL/lymphoma 7 protein family member C

PRODUCT SPECIFICATION

Molecular Weight

25.9 kDa (240aa) confirmed by MALDI-TOF (Molecular weight on SDS-PAGE will appear higher)

Concentration

0.25mg/ml (determined by Bradford assay)

Formulation

Liquid in. 20mM Tris-HCl buffer (pH 8.0) containing 0.15M NaCl, 20% glycerol, 1mM DTT

Purity

> 85% by SDS-PAGE

Tag

His-Tag

Application

SDS-PAGE

Storage Condition

Can be stored at +2C to +8C for 1 week. For long term storage, aliquot and store at -20C to -80C. Avoid repeated freezing and thawing cycles.

BACKGROUND

Description

BCL7C is identified by the similarity of its product to the N-terminal region of BCL7A protein. The BCL7A protein is encoded by the gene known to be directly involved in a three-way gene translocation in a Burkitt lymphoma cell line. The function of this gene has not yet been determined. Recombinant human BCL7C protein, fused to His-tag at N-terminus, was expressed in E. coli and purified by using conventional chromatography techniques

Amino acid Sequence

MGSSHHHHHH SGLVPRGSH MGSMAGRTVR AETRSRAKDD IKKVMATIEK VRRWEKRWVT VGDTSLRIFK

Recombinant human BCL7C protein

Catalog Number: ATGP2446

WVPVDPQEE ERRRAGGGAE RSRGRERRGR GASPRGGGPL ILLDLNDENS NQSFHSEGL QKGTEPSGG TPQPSRPVSP
AGPPEGVPEE AQPPRLGQER DPGGITAGST DEPPMLTKEE VPPELLEAEA PEAYPVFEPV PPVPEAAQGD TEDSEGAPPL
KRICPNAPDP

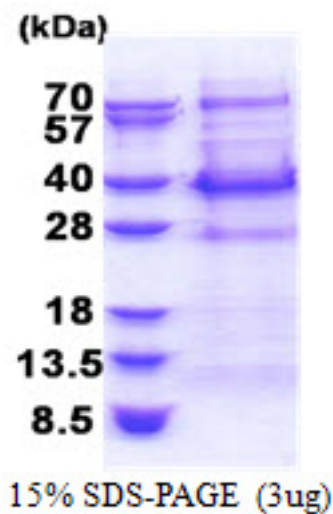
General References

Jadayel D.M., et al (1998). Gene 224:35-44(1998)

Mayya V., et al (2009). Sci. Signal. 2:RA46-RA46

DATA

SDS-PAGE



3ug by SDS-PAGE under reducing condition and visualized by coomassie blue stain.