

# Recombinant human NRAGE protein

Catalog Number: ATGP2455

## PRODUCT INFORMATION

---

### Expression system

E.coli

### Domain

504-760aa

### UniProt No.

Q9Y5V3

### NCBI Accession No.

NP\_001005333

### Alternative Names

Melanoma-associated antigen D1 isoform a, DLXIN-1, NRAGE

## PRODUCT SPECIFICATION

---

### Molecular Weight

31.7 kDa (280aa) confirmed by MALDI-TOF

### Concentration

0.25mg/ml (determined by Bradford assay)

### Formulation

Liquid in. 20mM Tris-HCl buffer (pH 8.0) containing 20% glycerol, 1mM DTT

### Purity

> 85% by SDS-PAGE

### Tag

His-Tag

### Application

SDS-PAGE

### Storage Condition

Can be stored at +2C to +8C for 1 week. For long term storage, aliquot and store at -20C to -80C. Avoid repeated freezing and thawing cycles.

## BACKGROUND

---

### Description

MAGED1, as known as Melanoma-associated antigen D1, is expressed in almost all normal adult tissues. It has been demonstrated to be involved in the p75 neurotrophin receptor mediated programmed cell death pathway. It has been involved in Prader-Willi syndrome, which includes hyperphagia, repetitive and compulsive behaviors, and cognitive impairment. Recombinant human MAGED1 protein, fused to His-tag at N-terminus, was expressed in E. coli and purified by using conventional chromatography.

## Recombinant human NRAGE protein

Catalog Number: ATGP2455

### Amino acid Sequence

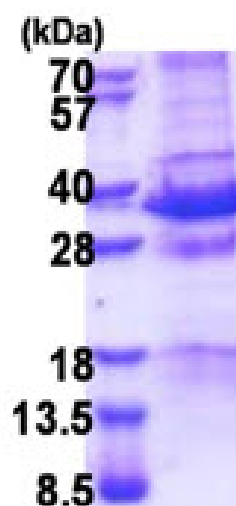
MGSSHHHHHH SSGLVPRGSH MGSLRSPNS RASQNPAAQ PRDVALLQER ANKLVKYLML KDYTKVPIKR SEMLRDIIRE  
YTDVYPEIIE RACFVLEKKF GIQLKEIDKE EHLYILISTP ESLAGILGTT KDTPKLGLLL VILGVIFMNG NRASEAVLWE  
ALRKMGLRPG VRHPLLGLDR KLLTYEFVKQ KYLDYRRVPN SNPPEYEFW GLRSYHETSK MKVLRFAEV QKRDPDWTA  
QFMEAADEAL DALDAAAAEA EARAEARTRM GIGDEAVSGP

### General References

Dombret C. et al. (2012) Hum Mol Genet. 21:4703-4717  
Mouri ., et al. (2012) J Neurosci. 32:4562-4580.

## DATA

### SDS-PAGE



3ug by SDS-PAGE under reducing condition and visualized by coomassie blue stain.

15% SDS-PAGE (3ug)