

Recombinant human PCP4L1 protein

Catalog Number: ATGP2456

PRODUCT INFORMATION

Expression system

E.coli

Domain

1-68aa

UniProt No.

A6NKN8

NCBI Accession No.

NP_001096036

Alternative Names

Purkinje cell protein 4-like protein 1, IQM1

PRODUCT SPECIFICATION

Molecular Weight

9.9 kDa (91aa) confirmed by MALDI-TOF (Molecular weight on SDS-PAGE will appear higher)

Concentration

0.5mg/ml (determined by BCA assay)

Formulation

Liquid in. 20mM Tris-HCl buffer (pH 8.0) containing 0.15M NaCl, 20% glycerol

Purity

> 85% by SDS-PAGE

Tag

His-Tag

Application

SDS-PAGE

Storage Condition

Can be stored at +2C to +8C for 1 week. For long term storage, aliquot and store at -20C to -80C. Avoid repeated freezing and thawing cycles.

BACKGROUND

Description

PCP4L1, also known as Purkinje cell protein 4-like protein 1, belongs to the PCP4 family and contains 1 IQ domain. Recombinant human PCP4L1 protein, fused to His-tag at N-terminus, was expressed in E. coli and purified by using conventional chromatography techniques.

Amino acid Sequence

MGSSHHHHHH SGLVPRGSH MGSMSLNTK TSPATNQAAG QEEKGKAGNV KKAEEEEID IDLTAPETEK AALAIQKFR
RFQKRKKDPS S

Recombinant human PCP4L1 protein

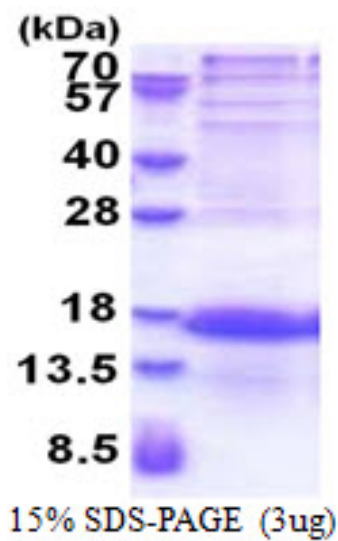
Catalog Number: ATGP2456

General References

Bulfone,A., et al. (2004) Gene Expr. Patterns 4 (3), 297-301

DATA

SDS-PAGE



3ug by SDS-PAGE under reducing condition and visualized by coomassie blue stain.