

Recombinant human PCMTD1 protein

Catalog Number: ATGP2473

PRODUCT INFORMATION

Expression system

E.coli

Domain

1-220aa

UniProt No.

Q96MG8

NCBI Accession No.

NP_443169

Alternative Names

Protein-L-isoaspartate O-methyltransferase domain-containing protein 1, Protein-L-isoaspartate O-methyltransferase domain-containing protein 1,

PRODUCT SPECIFICATION

Molecular Weight

27 kDa (243aa) confirmed by MALDI-TOF

Concentration

0.25mg/ml (determined by Bradford assay)

Formulation

Liquid in. 20mM Tris-HCl buffer (pH 8.0) containing 20% glycerol, 0.15M NaCl, 1mM DTT

Purity

> 95% by SDS-PAGE

Tag

His-Tag

Application

SDS-PAGE

Storage Condition

Can be stored at +2C to +8C for 1 week. For long term storage, aliquot and store at -20C to -80C. Avoid repeated freezing and thawing cycles.

BACKGROUND

Description

PCMTD1 belongs to the methyltransferase superfamily and is localized to cytoplasm. Recombinant human PCMTD1 protein, fused to His-tag at N-terminus, was expressed in E. coli and purified by using conventional chromatography techniques.

Amino acid Sequence

MGSSHHHHHH SGLVPRGSH MGSMGGAVSA GEDNDDLIDN LKEAQYIRTE RVEQAFRAID RGDYYLEGYR

Recombinant human PCMTD1 protein

Catalog Number: ATGP2473

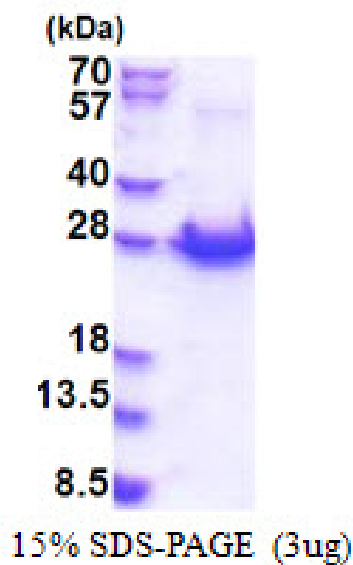
DNAYKDLAWK HGNIHLSAPC IYSEVMEALK LQPGLSFLNL GSGTGYLSTM VGLILGPFGI NHGIELHSDV VEYAKEKLES
FIKNSDSFDK FEFCEPAFVV GNCLQIASDS HQYDRIYCGA GVQKDHENYM KILLKVGIL VMPIEDQLTQ IMRTGQNTWE
SKNILAVSFA PLV

General References

Zody M.C., Garber M et al. (2006), Nature 440:671-675

DATA

SDS-PAGE



3ug by SDS-PAGE under reducing condition and visualized by coomassie blue stain.