

Recombinant human SLA2 protein

Catalog Number: ATGP2474

PRODUCT INFORMATION

Expression system

E.coli

Domain

1-261aa

UniProt No.

Q9H6Q3

NCBI Accession No.

NP_115590

Alternative Names

Src-like-adaptor 2 isoform a, Src-like-adaptor 2, C20orf156, MARS, SLAP-2, SLAP2

PRODUCT SPECIFICATION

Molecular Weight

31kDa (284aa)

Concentration

0.5mg/ml (determined by Bradford assay)

Formulation

Liquid in. 20mM Tris-HCl buffer (pH 8.0) containing , 10% glycerol, 0.4M urea

Purity

> 80% by SDS-PAGE

Tag

His-Tag

Application

SDS-PAGE, Denatured

Storage Condition

Can be stored at +2C to +8C for 1 week. For long term storage, aliquot and store at -20C to -80C. Avoid repeated freezing and thawing cycles.

BACKGROUND

Description

SLA2 is a member of the SLAP family of adapter proteins. The encoded protein may play an important receptor-proximal role in downregulating T and B cell-mediated responses and inhibits antigen receptor-induced calcium mobilization. This protein interacts with Cas-Br-M (murine) ecotropic retroviral transforming sequence c. Two transcript variants encoding distinct isoforms have been identified for this gene. Recombinant human SLA2 protein, fused to His-tag at N-terminus, was expressed in E. coli.

Recombinant human SLA2 protein

Catalog Number: ATGP2474

Amino acid Sequence

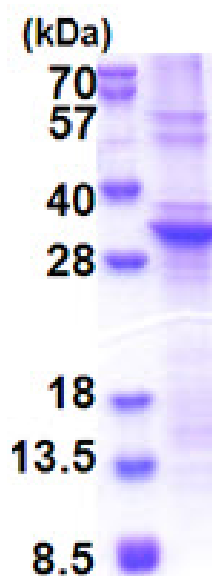
MGSSHHHHHH SSGLVPRGSH MGSMGSLPSR RKS LPSLS SSVQGQGPVT MEAERSKATA VALGSFPAGG PAELSLRLGE
PLTIVSEGDG WWTVLSEVSG REYNIPSVHV AKVSHGWLYE GLSREKAEEL LLLPGNPGGA FLIRESQTRR GSYSLSVRLS
RPASWDRIRH YRIHCLDNGW LYISPRLTFP SLQALVDHYS ELADDICLL KEPCVLQRAG PLPGKDIPLP VTVQRTPLNW
KELDSSLLFS EAATGEESLL SEGLRESLSF YISLNDEAVS LDDA

General References

Holland S.J., Liao X.C.. et al. (2001). J. Exp. Med. 194:1263-1276

DATA

SDS-PAGE



3ug by SDS-PAGE under reducing condition and visualized by coomassie blue stain.

15% SDS-PAGE (3ug)