

# Recombinant human Complement Factor B protein

Catalog Number: ATGP2479

## PRODUCT INFORMATION

---

### Expression system

E.coli

### Domain

260-764aa

### UniProt No.

P00751

### NCBI Accession No.

NP\_001701

### Alternative Names

complement factor B, AHuS4, BF, BFD, CFAB, FB, FBI12, GBG, H2-Bf, PBF2

## PRODUCT SPECIFICATION

---

### Molecular Weight

59.4 kDa (528aa)

### Concentration

1mg/ml (determined by Bradford assay)

### Formulation

Liquid in. 20mM Tris-HCl buffer (pH 8.0) containing 0.4M urea, 10% glycerol

### Purity

> 85% by SDS-PAGE

### Tag

His-Tag

### Application

SDS-PAGE, Denatured

### Storage Condition

Can be stored at +2C to +8C for 1 week. For long term storage, aliquot and store at -20C to -80C. Avoid repeated freezing and thawing cycles.

## BACKGROUND

---

### Description

CFB encodes complement factor B, a component of the alternative pathway of complement activation. Factor B circulates in the blood as a single chain polypeptide. upon activation of the alternative pathway, it is cleaved by complement factor D yielding the noncatalytic chain Ba and the catalytic subunit Bb. The active subunit Bb is a serine protease which associates with C3b to form the alternative pathway C3 convertase. Bb is involved in the proliferation of preactivated B lymphocytes, while Ba inhibits their proliferation. Recombinant human CFB-Bb protein, fused to His-tag at N-terminus, was expressed in E. coli.

# Recombinant human Complement Factor B protein

Catalog Number: ATGP2479

## Amino acid Sequence

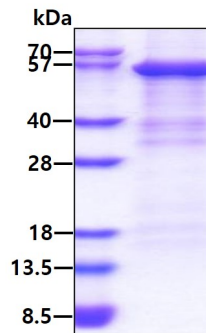
<MGSSHHHHHH SSGLVPRGSH MGS>KIVLDPS GSMNIYLVLD GSDSIGASNF TGAKKCLVNL IEKVASYGVK PRYGLVTYAT YPKIWVKVSE ADSSNADWVT KQLNEINYED HCLKSGTNTK KALQAVYSMM SWPDDVPEEG WNRTRHVIIIL MTDGLHNMGG DPITVIDEIR DLLYIGKDRK NPREDYLDVY VFGVGPLVNQ VNINALASKK DNEQHVFKVK DMENLEDVfy QMIDESQSLS LCGMVWEHRK GTDYHKQPWQ AKISVIRPSK GHESCMGAVV SEYFVLTAAH CFTVDDKEHS IKVSVGGEKR DLEIEVVLfH PNYNINGKKE AGIPEFYDYD VALIKLKNKL KYGQTIrPIC LPCTEGTTRA LRLPPTTTCQ QQKEELLPAQ DIKALFVSEE EKkLrKEVY IKNGDKKkGSC ERDAQYAPGY DKVKDISEVV TPRFLCTGGV SPYADPNTCR GDSGGPLIVH KRsrFIQGVV ISWGVVDVCK NQKRQKQVPA HARDFHINLF QVLPWLKEKL QDEDLGFL

## General References

Wu,L., et al. (2013) Invest. Ophthalmol. Vis. Sci. 54 (1), 170-174  
Thakkinstian,A., et al. (2012) Am. J. Epidemiol. 176 (5), 361-372

## DATA

### SDS-PAGE



3ug by SDS-PAGE under reducing condition and visualized by coomassie blue stain.