

Recombinant human MLF1IP protein

Catalog Number: ATGP2495

PRODUCT INFORMATION

Expression system

E.coli

Domain

147-418a

UniProt No.

Q71F23

NCBI Accession No.

NP_078905

Alternative Names

Centromere protein u, CENP50, CENPu, CENPu50, KLIP1, PBIP1

PRODUCT SPECIFICATION

Molecular Weight

33.7 kDa (295aa)

Concentration

1mg/ml (determined by Bradford assay)

Formulation

Liquid in. 20mM Tris-HCl buffer (pH 8.0) containing 10% glycerol, 0.4M urea

Purity

> 80% by SDS-PAGE

Tag

His-Tag

Application

SDS-PAGE, Denatured

Storage Condition

Can be stored at +2C to +8C for 1 week. For long term storage, aliquot and store at -20C to -80C. Avoid repeated freezing and thawing cycles.

BACKGROUND

Description

MLF1IP, as known as centromere, is a specialized chromatin domain, present throughout the cell cycle that acts as a platform on which the transient assembly of the kinetochore occurs during mitosis. It plays an important role in the correct PLK1 localization to the mitotic kinetochores. It is a scaffold protein responsible for the initial recruitment and maintenance of the kinetochore PLK1 population until its degradation. It also involved in transcriptional repression. Recombinant human MLF1IP protein, fused to His-tag at N-terminus, was expressed in E. coli.

Recombinant human MLF1IP protein

Catalog Number: ATGP2495

Amino acid Sequence

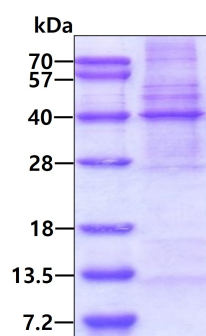
<MGSSHHHHHH SSGLVPRGSH MGS>TRRKVKS AEKISTQRHE VIRTASSEL SEKPAESVTS KKTGPLSAQP SVEKENLAIE
SQSKTQKKGK ISHDKRKKSR SKAIGSDTSD IVHIWCPEGM KTS DIKELNI VLPEFEKTHL EHQQRIESKV CKAAIATFYV
NVKEQFIKML KESQMLTNLK RKNAMISDI EKQRQRMIEV QDELLRLEPQ LKQLQTKYDE LKERKSSLRN AAYFLSNLQK
LYQDYSVDVQA QEPNVKETYD SSSLPALLFK ARTLLGAESH LRNINHQLEK LLDQG

General References

Foltz DR. et al. (2006) Nat Cell Biol. 8:458-469.

DATA

SDS-PAGE



3 μ g by SDS-PAGE under reducing condition and visualized by coomassie blue stain.