

Recombinant human LY6D protein

Catalog Number: ATGP2515

PRODUCT INFORMATION

Expression system

E.coli

Domain

21-98aa

UniProt No.

Q14210

NCBI Accession No.

NP_003686

Alternative Names

Lymphocyte antigen 6D precursor, E48, Ly-6D, Lymphocyte antigen 6 family member D, Lymphocyte antigen 6 complex, Locus D

PRODUCT SPECIFICATION

Molecular Weight

10.8 kDa (101aa) confirmed by MALDI-TOF (Molecular weight on SDS-PAGE will appear higher)

Concentration

0.5mg/ml (determined by absorbance at 280nm)

Formulation

Liquid in. 20mM Tris-HCl buffer (pH 8.0) containing 0.2M NaCl, 50% glycerol

Purity

> 90% by SDS-PAGE

Tag

His-Tag

Application

SDS-PAGE

Storage Condition

Can be stored at +2C to +8C for 1 week. For long term storage, aliquot and store at -20C to -80C. Avoid repeated freezing and thawing cycles.

BACKGROUND

Description

LY6D contains 1 uPAR/Ly6 domain and is expressed exclusively at the outer cell surface of transitional epithelia and the keratinocyte of stratified squamous epithelia. This protein may act as a specification marker at earliest stage specification of lymphocytes between B- and T-cell development. It marks the earliest stage of B-cell specification. Recombinant human LY6D protein, fused to His-tag at N-terminus, was expressed in E. coli and purified by using conventional chromatography techniques.

Recombinant human LY6D protein

Catalog Number: ATGP2515

Amino acid Sequence

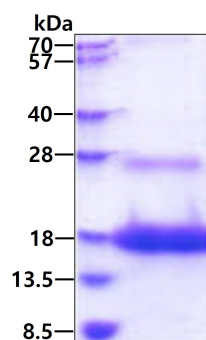
<MGSSHHHHHH SSGLVPRGSH MGS>LRCHVCT SSSNCKHSV CPASSRFCKT TNTVEPLRGN LVKKDCAESC
TPSYTLQGQV SSGTSSTQCC QEDLCNEKLH N

General References

Inlay MA, Bhattacharya D et al. (2009). Genes Dev. 23(20):2376-81.

DATA

SDS-PAGE



3ug by SDS-PAGE under reducing condition and visualized by coomassie blue stain.