

Recombinant human RLBP1 protein

Catalog Number: ATGP2522

PRODUCT INFORMATION

Expression system

E.coli

Domain

1-317aa

UniProt No.

P12271

NCBI Accession No.

NP_000317

Alternative Names

retinaldehyde-binding protein 1, CRALBP

PRODUCT SPECIFICATION

Molecular Weight

38.9 kDa (340aa)

Concentration

1mg/ml (determined by Bradford assay)

Formulation

Liquid in. 20mM Tris-HCl buffer (pH 8.0) containing 0.4M UREA, 10% glycerol

Purity

> 90% by SDS-PAGE

Tag

His-Tag

Application

SDS-PAGE, Denatured

Storage Condition

Can be stored at +2C to +8C for 1 week. For long term storage, aliquot and store at -20C to -80C. Avoid repeated freezing and thawing cycles.

BACKGROUND

Description

RLBP1 is a 36-kD water-soluble protein which carries 11-cis-retinaldehyde or 11-cis-retinal as physiologic ligands. It may be a functional component of the visual cycle. Mutations of this gene have been associated with severe rod-cone dystrophy, Bothnia dystrophy (nonsyndromic autosomal recessive retinitis pigmentosa) and retinitis punctata albescens. Recombinant human RLBP1 protein, fused to His-tag at N-terminus, was expressed in E. coli.

Amino acid Sequence

<MGSSHHHHHH SGLVPRGSH MGS>MSEGVGT FRMVPEEEQE LRAQLEQLTT KDHGPVFGPC SQLPRHTLQK

Recombinant human RLBP1 protein

Catalog Number: ATGP2522

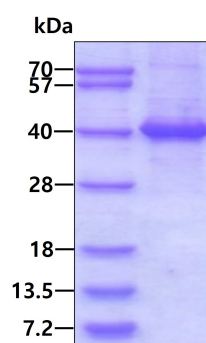
AKDELNEREE TREEAVRELQ EMVQAQAASG EELAVAVAER VQEKDSGFFL RFIRARKFNV GRAYELLRGY VNFRLQYPEL
FDSLSPAVR CTIEAGYPGV LSSRDKYGRV VMLFNINWQ SQEITFDEIL QAYCFLEKL LENEETQING FCIIENFKGF
TMQQAASLRT SDLRKMVDML QDSFPAFKA IHFIHQPWYF TTTYNVVKPF LSKLLERVF VHGDLSGFY QEIDENILPS
DFGGTLPKYD GKAVAEQLFG PQAQAENTAF

General References

Nojima, K., et al. (2012) *Ophthalmic Genet.* 33 (2), 83-88
Neutzner, R.V., et al. (2011) *Ophthalmologie* 108 (11), 1045-1049

DATA

SDS-PAGE



3 μ g by SDS-PAGE under reducing condition and visualized by coomassie blue stain.