

Recombinant human EAF1 protein

Catalog Number: ATGP2534

PRODUCT INFORMATION

Expression system

E.coli

Domain

182-268aa

UniProt No.

Q96JC9

NCBI Accession No.

NP_149074.3

Alternative Names

ELL associated factor 1, ELL-associated factor 1

PRODUCT SPECIFICATION

Molecular Weight

11.3 kDa (110aa) confirmed by MALDI-TOF

Concentration

0.5mg/ml (determined by BCA assay)

Formulation

Liquid in. 20mM Tris-HCl buffer (pH 8.0) containing 0.15M NaCl, 10% glycerol

Purity

> 90% by SDS-PAGE

Tag

His-Tag

Application

SDS-PAGE

Storage Condition

Can be stored at +2C to +8C for 1 week. For long term storage, aliquot and store at -20C to -80C. Avoid repeated freezing and thawing cycles.

BACKGROUND

Description

EAF1 belongs to the EAF family and is strongly expressed in heart, brain, placenta, lung, liver, skeletal muscle, kidney, pancreas, spleen, prostate, testis, small intestine and colon. This protein acts as a transcriptional transactivator of ELL and ELL2 elongation activities. Recombinant human EAF1 protein, fused to His-tag at N-terminus, was expressed in E. coli and purified by using conventional chromatography techniques.

Amino acid Sequence

<MGSSHHHHHH SGLVPRGSH MGS>DII EQMS SSSGSSSSDS ESSSGSDDDS SSSGGEDNGP ASPPQPSHQQ

Recombinant human EAF1 protein

Catalog Number: ATGP2534

PYNSRPAVAN GTSRPQGSNQ LMNTRLRNDLQ LSESGSDSDD

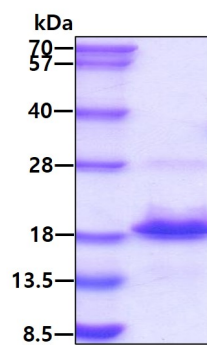
General References

Simone F., et al. (2001) *Blood*. 98:201-209

Kong S.E., et al. (2005) *Proc. Natl. Acad. Sci. u.S.A.* 102:10094-10098

DATA

SDS-PAGE



3 μ g by SDS-PAGE under reducing condition and visualized by coomassie blue stain.