

Recombinant human MMP-10 protein

Catalog Number: ATGP2537

PRODUCT INFORMATION

Expression system

E.coli

Domain

99-476aa

UniProt No.

P09238

NCBI Accession No.

NP_002416

Alternative Names

stromelysin-2 preproprotein, SL-2, STMY2

PRODUCT SPECIFICATION

Molecular Weight

45.4 kDa (401aa)

Concentration

0.5mg/ml (determined by Bradford assay)

Formulation

Liquid in. 20mM Tris-HCl buffer (pH 8.0) containing 0.4M urea, 10% glycerol

Purity

> 90% by SDS-PAGE

Tag

His-Tag

Application

SDS-PAGE, Denatured

Storage Condition

Can be stored at +2C to +8C for 1 week. For long term storage, aliquot and store at -20C to -80C. Avoid repeated freezing and thawing cycles.

BACKGROUND

Description

MMP10 protein of the matrix metalloproteinase (MMP) family is involved in the breakdown of extracellular matrix in normal physiological processes, such as embryonic development, reproduction, and tissue remodeling, as well as in disease processes, such as arthritis and metastasis. Most MMP's are secreted as inactive proproteins which are activated when cleaved by extracellular proteinases. The enzyme encoded by this gene degrades proteoglycans and fibronectin. MMP10 is part of a cluster of MMP genes which localize to chromosome 11q22.3. Recombinant human MMP10 protein, fused to His-tag at N-terminus, was expressed in E. coli.

Recombinant human MMP-10 protein

Catalog Number: ATGP2537

Amino acid Sequence

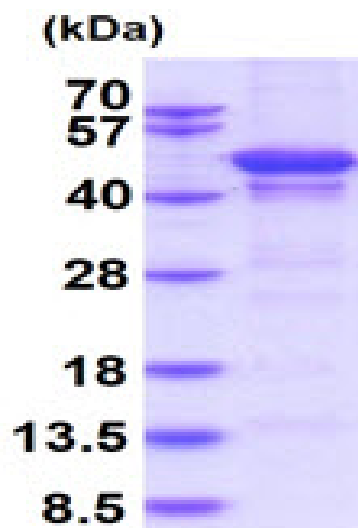
MGSSHHHHHH SGLVPRGSH MGSFSSFPGM PKWRKTHLTY RIVNYTPDLP RDAVDSAIEK ALKVWEEVTP LTFSRLYEGE
ADIMISFAVK EHGDFYSFDG PGHSLAHAYP PGPGLYGDIH FDDDEKWTEG ASGTNLFVA AHELGHSLGL FHSANTEALM
YPLYSFTEL AQFRLSQDDV NGIQSLYGPP PASTEEPLVP TKSVPSPGSEM PAKCDPALSF DAISTLRGEY LFFKDRYFWR
RSHWNPEPEF HLISAFWPSL PSYLDAAAYEV NSRDTVFIFK GNEFWAIRGN EVQAGYPRGI HTLGFPTIR KIDAAVSDKE
KKKTYFFAAD KYWRFDENSQ SMEQGFPRLI ADDDFGVEPK VDAVLQAFGF FYFFSGSSQF EFDPNARMVT HILKSNSWLH C

General References

Wojciechowski,R., et al. (2013) Ophthalmology 120 (2), 298-305
Sze,K.M., et al. (2013) Hepatology 57 (1), 131-139

DATA

SDS-PAGE



3ug by SDS-PAGE under reducing condition and visualized by coomassie blue stain.

15% SDS-PAGE (3ug)