

Recombinant human Kallikrein 15/KLK15 protein

Catalog Number: ATGP2558

PRODUCT INFORMATION

Expression system

E.coli

Domain

22-256aa

UniProt No.

Q9H2R5

NCBI Accession No.

NP_059979

Alternative Names

Kallikrein-15, kallikrein related peptidase 15, ACO protease, HSRNASPH, prostinogen

PRODUCT SPECIFICATION

Molecular Weight

28.2 kDa (258aa)

Concentration

1mg/ml (determined by Bradford assay)

Formulation

Liquid in. 20mM Tris-HCl buffer (pH 8.0) containing 10% glycerol, 0.4M urea

Purity

> 90% by SDS-PAGE

Tag

His-Tag

Application

SDS-PAGE, Denatured

Storage Condition

Can be stored at +2C to +8C for 1 week. For long term storage, aliquot and store at -20C to -80C. Avoid repeated freezing and thawing cycles.

BACKGROUND

Description

Kallikreins are a subgroup of serine proteases having diverse physiological functions. Growing evidence suggests that many kallikreins are implicated in carcinogenesis and some have potential as novel cancer and other disease biomarkers. KLK15 is one of the fifteen kallikrein subfamily members located in a cluster on chromosome 19. In prostate cancer, it has increased expression, which indicates its possible use as a diagnostic or prognostic marker for prostate cancer. KLK15 contains multiple polyadenylation sites and alternative splicing results in multiple transcript variants encoding distinct isoforms. Recombinant human KLK15 protein, fused to

Recombinant human Kallikrein 15/KLK15 protein

Catalog Number: ATGP2558

His-tag at N-terminus, was expressed in E. coli.

Amino acid Sequence

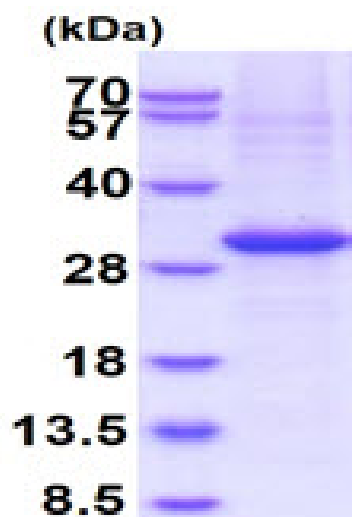
MGSSHHHHHHH SSSLVPRGSH MGSLLGDEC APHSQPWQVA LYERGRFNCG ASLISPHWVL SAAHCQSRFM
RVRLGEHNLK KRDGPEQLRT TSRVIPHPRY EARSHRNDIM LLRLVQPARL NPQVRPAVLP TRCPHPGEAC VVSGWGLVSH
NEPGTAGSPR SQVSLPDTLH CANISIISDT SCDKSYPGRL TNTMVCAGAE GRGAESCEGD SGGPLVCGGI LQGIVSWG DV
PCDNTTKPGV YTKVCHYLEW IRETMKRN

General References

Yousef GM, Scorilas A, et al. (2001) J Biol Chem 276 (1): 53-61.

DATA

SDS-PAGE



3ug by SDS-PAGE under reducing condition and visualized by coomassie blue stain.

15% SDS-PAGE (3ug)