

Recombinant human IL-28A/IFNL2 protein

Catalog Number: ATGP2563

PRODUCT INFORMATION

Expression system

E.coli

Domain

26-200aa

UniProt No.

Q8IZJ0

NCBI Accession No.

NP_742150

Alternative Names

Interferon lambda 2, IFN-lambda-2, Cytokine Zcyto20, Interleukin-28A, IL-28A, ZCYTO20

PRODUCT SPECIFICATION

Molecular Weight

22.1 kDa (198aa)

Concentration

0.5mg/ml (determined by Bradford assay)

Formulation

Liquid in. 20mM Tris-HCl buffer (pH 8.0) containing 10% glycerol, 0.4M urea

Purity

> 85% by SDS-PAGE

Tag

His-Tag

Application

SDS-PAGE, Denatured

Storage Condition

Can be stored at +2C to +8C for 1 week. For long term storage, aliquot and store at -20C to -80C. Avoid repeated freezing and thawing cycles.

BACKGROUND

Description

IFNL2, also known as Interleukin 28A (IL28A), is a cytokine distantly related to type I interferons and the IL-10 family. Interleukin 28A (IL28A), Interleukin 28B (IL28B), and interleukin 29 (IL29) are three closely related cytokine genes that form a cytokine gene cluster on a chromosomal region mapped to 19q13. Expression of the cytokines encoded by the three genes can be induced by viral infection. All three cytokines have been shown to interact with a heterodimeric class II cytokine receptor that consists of interleukin 10 receptor, beta (IL10RB) and interleukin 28 receptor, alpha (IL28RA). Recombinant human IFNL2 protein, fused to His-tag at N-terminus, was

Recombinant human IL-28A/IFNL2 protein

Catalog Number: ATGP2563

expressed in E. coli.

Amino acid Sequence

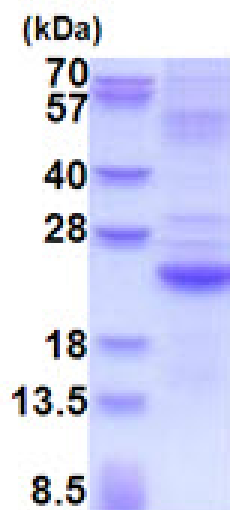
MGSSHHHHHH SSSLVPRGSH MGSVPVARLH GALPDARGCH IAQFKSLSPQ ELQAFKRAKD ALEESLLKDCRCHSRLFPR
TWDLRQLQVR ERPMALAEAL ALTLKVLEAT ADTDPALVDV LDQPLHTLHH ILSQFRACIQ PQPTAGPRTR GRLHHWLYRL
QEAPKKESPG CLEASVTFNL FRLLRDLNC VASGDLCV

General References

Sheppard P., et al. (2003) Nat. Immunol. 4:63-68.

DATA

SDS-PAGE



3ug by SDS-PAGE under reducing condition and visualized by coomassie blue stain.

15% SDS-PAGE (3ug)