

Recombinant human Heparanase/HPSE protein

Catalog Number: ATGP2564

PRODUCT INFORMATION

Expression system

E.coli

Domain

36-543aa

UniProt No.

Q9Y251

NCBI Accession No.

NP_006656

Alternative Names

Heparanase isoform 1 preproprotein, Heparanase, HPA, HPA1, HPR1, HPSE1, HSE1

PRODUCT SPECIFICATION

Molecular Weight

60 kDa (531aa)

Concentration

1mg/ml (determined by Bradford assay)

Formulation

Liquid in. 20mM Tris-HCl buffer (pH 8.0) containing 10% glycerol, 0.4M urea

Purity

> 85% by SDS-PAGE

Tag

His-Tag

Application

SDS-PAGE, Denatured

Storage Condition

Can be stored at +2C to +8C for 1 week. For long term storage, aliquot and store at -20C to -80C. Avoid repeated freezing and thawing cycles.

BACKGROUND

Description

Heparan sulfate proteoglycans are major components of the basement membrane and extracellular matrix. HPSE is an enzyme that cleaves heparan sulfate proteoglycans to permit cell movement through remodeling of the extracellular matrix. In addition, this cleavage can release bioactive molecules from the extracellular matrix. Recombinant human HPSE protein, fused to His-tag at N-terminus, was expressed in E. coli.

Amino acid Sequence

MGSSHHHHHH SGLVPRGSH MGSQDVVDLD FFTQEPLHLV SPSFLSVTID ANLATDPRFL ILLGSPKLRT LARGLSPAYL

Recombinant human Heparanase/HPSE protein

Catalog Number: ATGP2564

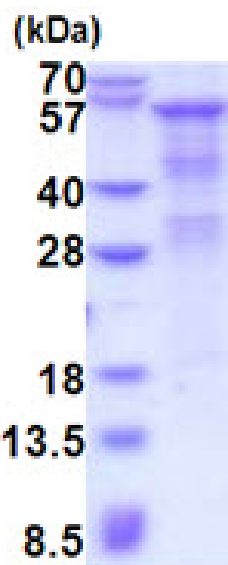
RFGGTKTDFL IFDPKKESTF EERSYWQSQV NQDICKYGSI PPDVEEKLRRL EWPYQEQLLL REHYQKKFKN STYSRSSVDV
LYTFANCSGL DLIFGLNALL RTADLQWNSS NAQLLLDYCS SKGYNISWEL GNPNNSFLKK ADIFINGSQL GEDFIQLHKL
LRKSTFKNAK LYGPDVGQPR RKTAKMLKSF LKAGGEVIDS VTWHHYLNG RTATKEDFLN PDVLDIFISS VQKVFQVVE
TRPGKKVWLG ETSSAYGGGA PLLSDTFAAG FMWLDKLGSL ARMGIEVVMR QVFFGAGNYH LVDENFDPLP DYWLSLLFKK
LVGTVKVLMS VQGSKRRKLR VYLHCTNTDN PRYKEGDLTL YAINLHNVTK YLRLPYPFSN KQVDKYLLRP LGPHGLLSKS
VQLNGLTLKM VDDQTLPLM EKPLRPGSSL GLPAFSYSFF VIRNAKVAAC I

General References

Okada Y., et al. (2002) J. Biol. Chem. 277:42488-42495.

DATA

SDS-PAGE



3ug by SDS-PAGE under reducing condition and visualized by coomassie blue stain.

15% SDS-PAGE (3ug)