

# Recombinant human SKA1 protein

Catalog Number: ATGP2596

## PRODUCT INFORMATION

---

### Expression system

E.coli

### Domain

1-255aa

### UniProt No.

Q96BD8

### NCBI Accession No.

NP\_001034624

### Alternative Names

Spindle and kinetochore-associated protein 1, Spindle and kinetochore-associated protein 1, C18orf24

## PRODUCT SPECIFICATION

---

### Molecular Weight

31.9 kDa (278aa) confirmed by MALDI-TOF

### Concentration

0.25mg/ml (determined by Bradford assay)

### Formulation

Liquid in. 20mM Tris-HCl buffer (pH 8.0) containing 10% glycerol 0.1M NaCl

### Purity

> 80% by SDS-PAGE

### Tag

His-Tag

### Application

SDS-PAGE

### Storage Condition

Can be stored at +2C to +8C for 1 week. For long term storage, aliquot and store at -20C to -80C. Avoid repeated freezing and thawing cycles.

## BACKGROUND

---

### Description

SKA1, as known as spindle and kinetochore-associated protein 1, is a direct component of the kinetochore-microtubule interface and directly associates with microtubules as oligomeric assemblies. The complex facilitates the processive movement of microspheres along a microtubule in a depolymerization-coupled manner. In the complex, it mediates the interaction with microtubules. Recombinant human SKA1 protein, fused to His-tag at N-terminus, was expressed in E. coli and purified by using conventional chromatography.

## Recombinant human SKA1 protein

Catalog Number: ATGP2596

### Amino acid Sequence

MGSSHHHHHH SSGLVPRGSH MGSMASDLE QLCSHVNEKI GNIKKTSLR NCGQEPTLKT VLNKIGDEII VINELLNKLE  
LEIQYQEQTN NSLKELCESL EEDYKDIEHL KENVPSHLPQ VTVTQSCVKG SLDPEEPIK VEEPEPVKKP PKEQRSIKEM  
PFITCDEFNG VPSYMKSRIT YNQINDVIKE INKAVISKYK ILHQPKSMN SVTRNLYHRF IDEETKDTKG RYFIVEADIK  
EFTTLKADKK FHVLLNLRH CRRLSEVRGG GLTRYVIT

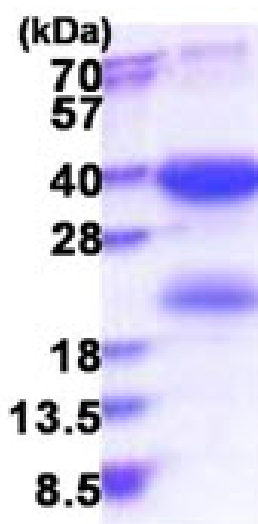
### General References

Ota T. et al. (2004) Nat Genet. 36:40-45

Hanisch A. et al. (2006) EMBO J. 25: 5504-5515.

## DATA

### SDS-PAGE



3ug by SDS-PAGE under reducing condition and visualized by coomassie blue stain.

15% SDS-PAGE (3ug)