

# Recombinant human GTSF1 protein

Catalog Number: ATGP2630

## PRODUCT INFORMATION

---

### Expression system

E.coli

### Domain

1-167aa

### UniProt No.

Q8WW33

### NCBI Accession No.

NP\_653195

### Alternative Names

Gametocyte-specific factor 1, FAM112B

## PRODUCT SPECIFICATION

---

### Molecular Weight

21.7 kDa (190aa) confirmed by MALDI-TOF

### Concentration

0.5mg/ml (determined by Bradford assay)

### Formulation

Liquid in. 20mM Tris-HCl buffer (pH 8.0) containing 0.15M NaCl, 20% glycerol, 1mM DTT

### Purity

> 90% by SDS-PAGE

### Tag

His-Tag

### Application

SDS-PAGE

### Storage Condition

Can be stored at +2C to +8C for 1 week. For long term storage, aliquot and store at -20C to -80C. Avoid repeated freezing and thawing cycles.

## BACKGROUND

---

### Description

GTSF1 belongs to the uPF0224 (FAM112) family and contains 1 CHHC-type zinc finger. Recombinant human GTSF1 protein fused to His-tag at N-terminus, was expressed in E. coli and purified by using conventional chromatography techniques.

### Amino acid Sequence

MGSSHHHHHH SGLVPRGSH MGSMEETYTD SLDPEKLLQC PYDKNHQIRA CRFPYHLIKC RKNHPDVASK LATCPFNARH QVPRAEISHH ISSCDDRSCI EQDVVNQTRS LRQETLAEST WQCPPCEDDW DKDLWEQTST PFVWGTTTHYS DNNSPASNIV

# Recombinant human GTSF1 protein

Catalog Number: ATGP2630

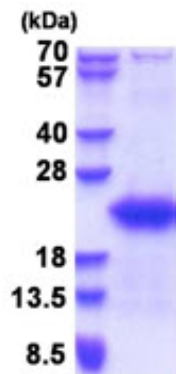
TEHKNNLASG MRVPKSLPYV LPWKNNNGNAQ

## General References

Yoshimura T, Toyoda S, et al. (2009). Dev Biol. 335(1):216-27.

## DATA

### SDS-PAGE



15% SDS-PAGE (3ug)

3ug by SDS-PAGE under reducing condition and visualized by coomassie blue stain.