

Recombinant human TSSK6 protein

Catalog Number: ATGP2635

PRODUCT INFORMATION

Expression system

E.coli

Domain

1-273aa

UniProt No.

Q9BXA6

NCBI Accession No.

NP_114426.1

Alternative Names

Testis-specific serine kinase 6, CT72, FKSG82, SSTK, TSSK4

PRODUCT SPECIFICATION

Molecular Weight

32.7 kDa (296aa)

Concentration

1mg/ml (determined by Bradford assay)

Formulation

Liquid in. 20mM Tris-HCl buffer (pH 8.0) containing 10% glycerol 0.4M urea

Purity

> 80% by SDS-PAGE

Tag

His-Tag

Application

SDS-PAGE, Denatured

Storage Condition

Can be stored at +2C to +8C for 1 week. For long term storage, aliquot and store at -20C to -80C. Avoid repeated freezing and thawing cycles.

BACKGROUND

Description

TSSK6, also known as testis-specific serine/threonine-protein kinase 6, is a member of the CAMK Ser/Thr protein kinase family. This protein contains one protein kinase domain. It is highly expressed in the testis and lowly expressed in the colon, prostate, thymus, small intestine, and peripheral blood leukocytes. It interacts with the heatshock proteins HSPA8, HSPCB, and HAPA1A; these interactions appear to be required for TSSK6 kinase activity. It plays a role in DNA condensation during postmeiotic chromatin remodeling. Otherwise, TSSK6 is required for sperm production and function. Recombinant human TSSK6 protein, fused to His-tag at N-terminus,

Recombinant human TSSK6 protein

Catalog Number: ATGP2635

was expressed in E. coli.

Amino acid Sequence

<MGSSHHHHHH SSGLVPRGSH MGS>MSGDKLL SELGYKLGRT IGECSYSKVK VATSKKYKGT VAIKVVD^{RRR}
APPDFVNKFL PRELSILRGV RHPHIVHVFE FIEVCNGKLY IVMEAAATDL LQAVQRNGRI PGVQARDLFA QIAGAVRYLH
DHHLVHRDLK CENVLLSPDE RRVKLDFGF GRQAHGYDDL STTYCGSAAY ASPEVLLGIP YDPKKYDVWS MGWVLYVMVT
GCMPFDDSDI AGLPRRQKRG VLYPEGLELS ERCKALIAEL LQFSPSARPS AGQVARNCWL RAGDSG

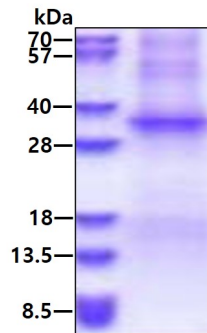
General References

Su D. et al. (2010) Asian J Androl. 12:234-239.

Sosnik J et al. (2009) J Cell Sci. 122:2741-2749.

DATA

SDS-PAGE



3ug by SDS-PAGE under reducing condition and visualized by coomassie blue stain.