

# Recombinant human SYT3 protein

Catalog Number: ATGP2637

## PRODUCT INFORMATION

---

### Expression system

E.coli

### Domain

76-590aa

### UniProt No.

Q9BQG1

### NCBI Accession No.

NP\_115674

### Alternative Names

Synaptotagmin-3, Synaptotagmin-3, SytIII

## PRODUCT SPECIFICATION

---

### Molecular Weight

57.7 kDa (540aa)

### Concentration

1mg/ml (determined by Bradford assay)

### Formulation

Liquid in. 20mM Tris-HCl buffer (pH 8.0) containing 10% glycerol 0.4M urea

### Purity

> 85% by SDS-PAGE

### Tag

His-Tag

### Application

SDS-PAGE, Denatured

### Storage Condition

Can be stored at +2C to +8C for 1 week. For long term storage, aliquot and store at -20C to -80C. Avoid repeated freezing and thawing cycles.

## BACKGROUND

---

### Description

SYT3, also known as synaptotagmin-3, belongs to the synaptotagmin family. It may be involved in Ca (2+) - dependent exocytosis of secretory vesicles through Ca (2+) and phospholipid binding to the C2 domain or may serve as Ca (2+) sensors in the process of vesicular trafficking and exocytosis. Recombinant human SYT3 protein, fused to His-tag at N-terminus, was expressed in E. coli.

### Amino acid Sequence

MGSSHHHHHH SGLVPRGSH MGSEFWKLCW VPWRDKGGS A VGGGPLRKDL GPGVGLAGLV GGGGHHLAAG

# Recombinant human SYT3 protein

Catalog Number: ATGP2637

LGGHPLLGGP HHHAAHAAHHP PFAELLEPGS LGGSDTPEPS YLDMDSYPEA AAAAVAAGVK PSQTSPELPS EGGAGSGLLL  
LPPSGGGLPS AQSHQQVTSL APTTRYPALP RPLTQQTLTS QPDPSEERP PALPLPLPGG EEKAKLIGQI KPELYQGTGP  
GGRRSGGGPG SGEAGTGAPC GRISFALRYL YGSDQLVVRI LQALDLPKAD SNGFSDPYVK IYLLPDRKKK FQTKVHRKTL  
NPVFNETFQF SVPLAELAQR KLHFSVYDFD RFSRHDLIQ VVLDNLELA EQPPDRPLWR DIVEGGSEKA DLGELNFSLC  
YLPTAGRLTV TIIKASNLKA MDLTGFSDPY VKASLISEGR RLKKRKTSL KNTLNPTYNE ALVFDVAPES VENVGLSIIV  
VDYDCIGHNE VIGVCRVGPD AADPHGREHW AEMLANPRKP VEHWHQLVEE KTVTSFTKGS KGLSEKENSE

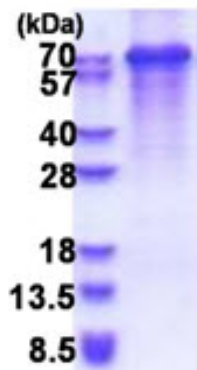
## General References

Jones JM. et al. (1995) Mamm Genome. 6:212-213.

Li C. et al. (1995) Nature. 375:594-599.

## DATA

### SDS-PAGE



3ug by SDS-PAGE under reducing condition and visualized by coomassie blue stain.

15% SDS-PAGE (3ug)