

Recombinant human PLA1A protein

Catalog Number: ATGP2661

PRODUCT INFORMATION

Expression system

E.coli

Domain

26-456aa

UniProt No.

Q53H76

NCBI Accession No.

NP_056984

Alternative Names

Phospholipase A1 member A, PS-PLA1, PSPLA1

PRODUCT SPECIFICATION

Molecular Weight

49.5 kDa (454aa)

Concentration

1mg/ml (determined by Bradford assay)

Formulation

Liquid in. 20mM Tris-HCl buffer (pH 8.0) containing 0.4M urea, 10% glycerol

Purity

> 80% by SDS-PAGE

Tag

His-Tag

Application

SDS-PAGE, Denatured

Storage Condition

Can be stored at +2C to +8C for 1 week. For long term storage, aliquot and store at -20C to -80C. Avoid repeated freezing and thawing cycles.

BACKGROUND

Description

PLA1A is a phospholipase that hydrolyzes fatty acids at the sn-1 position of phosphatidylserine and 1-acyl-2-lysophosphatidylserine. This secreted protein hydrolyzes phosphatidylserine in liposomes. Three transcript variants encoding different isoforms have been found for this gene. Recombinant human PLA1A protein, fused to His-tag at N-terminus, was expressed in E. coli.

Amino acid Sequence

MGSSHHHHHH SGLVPRGSH MGSDAPPTPQ PKCADFQSAN LFEGTDLKVQ FLLFVPSNPS CGQLVEGSSD LQNSGFNATL

Recombinant human PLA1A protein

Catalog Number: ATGP2661

GTKLIIHGFR VLGTKPSWID TFIRTLRAT NANVIAVDWI YGSTGVYFSA VKNVIKLSLE ISLFLNKLLV LGVSESSIHI
IGVSLGAHVGM GMVGQLFGGQ LGQITGLDPA GPEYTRASVE ERLDAGDALF VEAIHDTDN LGIRIPVGHV DYFVNGGQDQ
PGCPTFFYAG YSYLICDHMR AVHLYISALE NSCPLMAFPC ASYKAFLAGR CLDCFNPFL SCPRIGLVEQ GGVKIEPLPK
EVKVYLLTTS SAPYCMHHS L VEFHLKELRN KDTNIEVTFL SSNITSSSKI TIPKQRYGK GIIAHATPQC QINQVKFKFQ
SSNRVWKKDR TTIIGKFCTA LLPVNDREKM VCLPEPVNLQ ASVTVSCDLK IACV

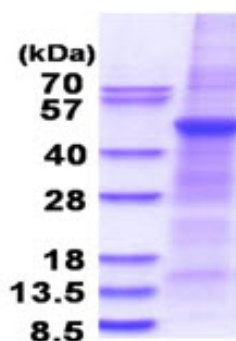
General References

Wang J., et al. (2002) J. Hum. Genet. 47:611-613

Nagai Y., et al. (1999) J. Biol. Chem. 274:11053-11059

DATA

SDS-PAGE



3ug by SDS-PAGE under reducing condition and visualized by coomassie blue stain.

15% SDS-PAGE (3ug)