

Recombinant human RPL18A protein

Catalog Number: ATGP2670

PRODUCT INFORMATION

Expression system

E.coli

Domain

1-176aa

UniProt No.

Q02543

NCBI Accession No.

NP_000971

Alternative Names

60S ribosomal protein L18a, L18A

PRODUCT SPECIFICATION

Molecular Weight

23.2 kDa (199aa)

Concentration

1mg/ml (determined by Bradford assay)

Formulation

Liquid in. 20mM Tris-HCl buffer (pH 8.0) containing 0.4M urea, 10% glycerol

Purity

> 85% by SDS-PAGE

Tag

His-Tag

Application

SDS-PAGE, Denatured

Storage Condition

Can be stored at +2C to +8C for 1 week. For long term storage, aliquot and store at -20C to -80C. Avoid repeated freezing and thawing cycles.

BACKGROUND

Description

Ribosomes, the organelles that catalyze protein synthesis, consist of a small 40S subunit and a large 60S subunit. Together these subunits are composed of 4 RNA species and approximately 80 structurally distinct proteins. RPL18A is a ribosomal protein that is a component of the 60S subunit. This protein belongs to the L18AE family of ribosomal proteins. It is located in the cytoplasm. RPL18A is co-transcribed with the u68 snoRNA, which is located in its third intron. Recombinant human RPL18A protein, fused to His-tag at N-terminus, was expressed in E. coli.

Recombinant human RPL18A protein

Catalog Number: ATGP2670

Amino acid Sequence

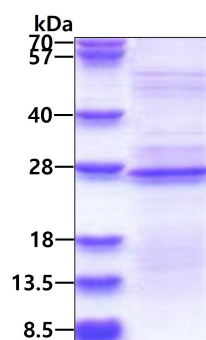
<MGSSHHHHHH SSGLVPRGSH MGS>MKASGTL REYKVVGRCL PTPKCHTPPL YMRIFAPNH VVAKSRFWYF
VSQKMKMKS SGEIVYCGQV FEKSPLRVKN FGIWLRYSR SGTHNMYREY RDLTTAGAVT QCYRDMGARH RARAHSIQIM
KVEEIAASKC RRPVAKQFHD SKIKFPLPHR VLRRQHKPRF TTKRPNTFF

General References

Dhar D, Mapa K, et al. (2006). Arch Virol. 151(3):509-24.
Kenmochi N, Kawaguchi T, et al. (1998). Genome Res. 8(5):509-23.

DATA

SDS-PAGE



3ug by SDS-PAGE under reducing condition and visualized by coomassie blue stain.