

Recombinant human CLPS protein

Catalog Number: ATGP2673

PRODUCT INFORMATION

Expression system

E.coli

Domain

18-112aa

UniProt No.

P04118

NCBI Accession No.

NP_001823.1

Alternative Names

Colipase isoform 1 preproprotein, Colipase

PRODUCT SPECIFICATION

Molecular Weight

12.5 kDa (118aa) confirmed by MALDI-TOF

Concentration

0.25mg/ml (determined by Bradford assay)

Formulation

Liquid in. 20mM Tris-HCl buffer (pH 8.0) containing 30% glycerol 1mM DTT, 0.1M NaCl

Purity

> 90% by SDS-PAGE

Tag

His-Tag

Application

SDS-PAGE

Storage Condition

Can be stored at +2C to +8C for 1 week. For long term storage, aliquot and store at -20C to -80C. Avoid repeated freezing and thawing cycles.

BACKGROUND

Description

CLPS, also known as Colipase, is a protein co-enzyme required for optimal enzyme activity of pancreatic lipase. It is secreted by the pancreas in an inactive form, procolipase, which is activated in the intestinal lumen by trypsin. Its function is to prevent the inhibitory effect of bile salts on the lipase-catalyzed intraduodenal hydrolysis of dietary long-chain triglycerides. Recombinant human CLPS protein, fused to His-tag at N-terminus, was expressed in E. coli and purified by using conventional chromatography techniques.

Recombinant human CLPS protein

Catalog Number: ATGP2673

Amino acid Sequence

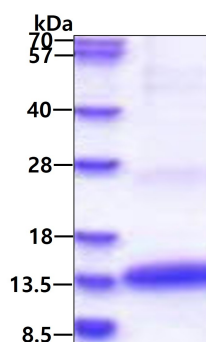
<MGSSHHHHHH SSGLVPRGSH MGS>APGPRGI IINLENGELC MNSAQCKSNQ CQHSSALGLA RCTSMASENS
ECSVKTYLGI YYKPCERGL TCEGDKTIVG SITNTNFGIC HDAGRSKQ

General References

Lowe ME. et al. (1997) Annu. Rev. Nutr. 17:141-158.
Crandall WV. et al. (2001) J. Biol. Chem. 276:12505-12512

DATA

SDS-PAGE



3ug by SDS-PAGE under reducing condition and visualized by coomassie blue stain.