

Recombinant human NAIF1 protein

Catalog Number: ATGP2700

PRODUCT INFORMATION

Expression system

E.coli

Domain

1-327aa

UniProt No.

Q69YI7

NCBI Accession No.

NP_931045

Alternative Names

nuclear apoptosis-inducing factor 1, bA379C10.2, C9orf90, RP11-379C10.2

PRODUCT SPECIFICATION

Molecular Weight

37.6 kDa (350aa) confirmed by MALDI-TOF

Concentration

0.25mg/ml (determined by Bradford assay)

Formulation

Liquid in. 20mM Tris-HCl buffer (pH 8.0) containing 0.15M NaCl, 30% glycerol, 1mM DTT

Purity

> 90% by SDS-PAGE

Tag

His-Tag

Application

SDS-PAGE

Storage Condition

Can be stored at +2C to +8C for 1 week. For long term storage, aliquot and store at -20C to -80C. Avoid repeated freezing and thawing cycles.

BACKGROUND

Description

NAIF1 belongs to the NAIF1 family. This protein Interacts with HARBI1 and Induces apoptosis. Recombinant human NAIF1 protein, fused to His-tag at N-terminus, was expressed in E. coli and purified by using conventional chromatography techniques.

Amino acid Sequence

MGSSHHHHHHH SGLVPRGSH MGSMVPAKK RKMNFSEREV EIIVEELELK KHLLVNHFNA GVPLAAKSAA WHGILRRVNA VATCRRELPE VKKKWSDLKT EVRRKVAQVR AAVEGGEAPG PTEEDGAGGP GTGGGSGGGG PAVAPVLLTP MQQRICNLLG

Recombinant human NAIF1 protein

Catalog Number: ATGP2700

EATIISLPST TEIHPVALGP SATAAAATVT LTQIPTETTY HTLEEGVVEY CTAEAPPPLP PETPVDMMQAQ HADTSVKPQA
LKSRIALNSA KLIQEQRVTN LHVKEIAQHL EQQNDLLQMI RRSQEVQACA QERQAQAMEG TQAALSVLIQ VLRPMIKDFR
RYLQSNANTANP APASDPGQVA QNGQPDSIIQ

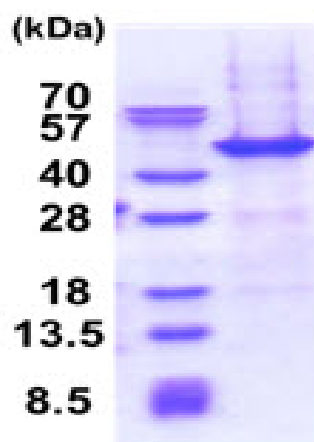
General References

Lv B., et al (2006). Int. J. Biochem. Cell Biol. 38:671-683

Sinzelle L., et al (2008). Proc. Natl. Acad. Sci. u.S.A. 105:4715-4720

DATA

SDS-PAGE



3ug by SDS-PAGE under reducing condition and visualized by coomassie blue stain.

15% SDS-PAGE (3ug)