

Recombinant human SDF2 protein

Catalog Number: ATGP2706

PRODUCT INFORMATION

Expression system

E.coli

Domain

19-211aa

UniProt No.

Q99470

NCBI Accession No.

NP_008854

Alternative Names

Stromal cell-derived factor 2, SDF-2

PRODUCT SPECIFICATION

Molecular Weight

23.7 kDa (216aa)

Concentration

1mg/ml (determined by Bradford assay)

Formulation

Liquid in. 20mM Tris-HCl buffer (pH 8.0) containing 10% glycerol, 0.4M urea

Purity

> 85% by SDS-PAGE

Tag

His-Tag

Application

SDS-PAGE, Denatured

Storage Condition

Can be stored at +2C to +8C for 1 week. For long term storage, aliquot and store at -20C to -80C. Avoid repeated freezing and thawing cycles.

BACKGROUND

Description

SDF2 is believed to be a secretory protein. It has regions of similarity to hydrophilic segments of yeast mannosyltransferases. Its expression is ubiquitous and the gene appears to be relatively conserved among mammals. Alternate splicing results in both coding and non-coding variants. A pseudogene of this gene is located on chromosome 15. Recombinant human SDF2 protein, fused to His-tag at N-terminus, was expressed in E. coli.

Recombinant human SDF2 protein

Catalog Number: ATGP2706

Amino acid Sequence

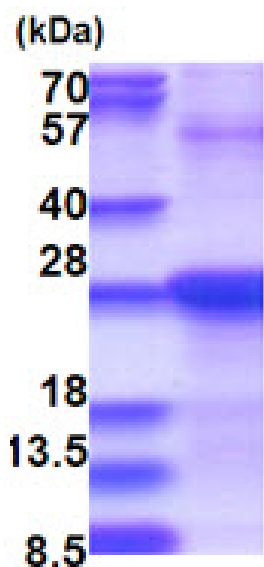
MGSSHHHHHH SGLVPRGSH MGSSSLGVVT CGSVVKLLNT RHNVRLHSHD VRYGSGSGQQ SVTGVTSVDD
SNSYWRIRGK SATVCERGTP IKCGQPIRLT HVNTGRNLHS HHFTSPLSGN QEVSAFGEEG EGDYLLDDWTV LCNGPYWVRD
GEVRFKHSST EVLLSVTGEQ YGRPISGQKE VHGMAQPSQN NYWKAMEGIF MKPSELLKAE AHHAEL

General References

Hamada T., et al. (1996) Gene 176:211-214.

DATA

SDS-PAGE



3ug by SDS-PAGE under reducing condition and visualized by coomassie blue stain.

15% SDS-PAGE (3ug)