

Recombinant human GNRH1 protein

Catalog Number: ATGP2712

PRODUCT INFORMATION

Expression system

E.coli

Domain

24-92aa

UniProt No.

P01148

NCBI Accession No.

NP_001076580

Alternative Names

Progonadoliberin-1 isoform 2 preproprotein, Gonadotropin-releasing hormone 1, GNRH, GRH, HH12, LHRH, LNRH

PRODUCT SPECIFICATION

Molecular Weight

10.3 kDa (92aa) confirmed by MALDI-TOF

Concentration

0.5mg/ml (determined by Bradford assay)

Formulation

Liquid in. 20mM Tris-HCl buffer (pH 8.0) containing 0.15M NaCl, 20% glycerol, 1mM DTT

Purity

> 90% by SDS-PAGE

Tag

His-Tag

Application

SDS-PAGE

Storage Condition

Can be stored at +2C to +8C for 1 week. For long term storage, aliquot and store at -20C to -80C. Avoid repeated freezing and thawing cycles.

BACKGROUND

Description

GNRH1 is secreted and then cleaved to form the 10 aa luteinizing hormone-releasing hormone (LHRH, also known as gonadoliberin-1), and prolactin release-inhibiting factor (also known as GnRH-associated peptide 1). GNRH1 stimulates the release of luteinizing and follicle stimulating hormones, which are important for reproduction. The protein stimulates the secretion of gonadotropins; it stimulates the secretion of both luteinizing and follicle-stimulating hormones. Recombinant human GNRH1 protein, fused to His-tag at N-terminus, was expressed in E. coli and purified by using conventional chromatography techniques.

Recombinant human GNRH1 protein

Catalog Number: ATGP2712

Amino acid Sequence

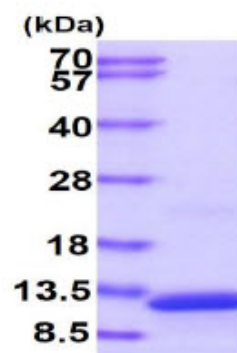
MGSSHHHHHH SSSLVPRGSH MGSQHWSYGL RPPGKRDAEN LIDSFQEIVK EVGQLAETQR FECTTHQPRS PLRDLKGALE
SLIEEETGQK KI

General References

Hayflick J.S., Adelman J.P., et al. (1989) Nucleic Acids Res. 17:6403-6403

DATA

SDS-PAGE



15% SDS-PAGE (3ug)

3ug by SDS-PAGE under reducing condition and visualized by coomassie blue stain.