

Recombinant human HLA-F protein

Catalog Number: ATGP2732

PRODUCT INFORMATION

Expression system

E.coli

Domain

22-305aa

UniProt No.

P30511

NCBI Accession No.

NP_001091949.1

Alternative Names

HLA class I histocompatibility antigen alpha chain F isoform 1, HLA class I histocompatibility antigen, alpha chain F isoform 1, CDA12, HLA-5.4, HLA-CDA12, HLA-F

PRODUCT SPECIFICATION

Molecular Weight

35.1 kDa (307aa) confirmed by MALDI-TOF

Concentration

0.25mg/ml (determined by Bradford assay)

Formulation

Liquid in. 20mM Tris-HCl buffer (pH 8.0) containing 0.15M NaCl, 20% glycerol, 1mM DTT

Purity

> 90% by SDS-PAGE

Tag

His-Tag

Application

SDS-PAGE

Storage Condition

Can be stored at +2C to +8C for 1 week. For long term storage, aliquot and store at -20C to -80C. Avoid repeated freezing and thawing cycles.

BACKGROUND

Description

HLA class I histocompatibility antigen, alpha chain F isoform 1 precursor, also known as HLA-F, is member of the MHC family that are specifically involved in the presentation of antigens to the T cell receptor. There are two classes of HLA antigens. HLA-F, belong to the Class I molecules. Class I molecules are expressed in nearly all cells and play a central role in the immune system by presenting peptides derived from the endoplasmic reticulum. Recombinant human HLA-F, fused to His-tag at N-terminus, was expressed in E. coli and purified by

Recombinant human HLA-F protein

Catalog Number: ATGP2732

using conventional chromatography techniques.

Amino acid Sequence

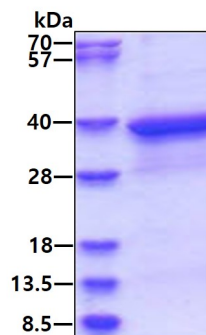
<MGSSHHHHHH SSGLVPRGSH MGS>GSHSLRY FSTAVSRPGR GEPRYIAVEY VDDTQFLRFD SDAaiprMEP
REPWVEQEGP QYWEWTTGYA KANAQTDRVA LRNLLRRYNQ SEAGSHTLQG MNGCDMGPDG RLLRGYHQHA
YDGKDYISLN EDLRSWTAAD TVAQITQRFY EAEFYAEFR TYLEGECELE LRRYLENGKE TLQRADPPKA HVAHHPISDH
EATLRCWALG FYPAEITLTW QRDGEEQTQD TELVETRPAG DGTFQKWA AV VPPGEEQRY TCHVQHEGLP QPLILRWEQS
PQPTIPI

General References

Kropshofer H., et al. (1998) EMBO J. 17: 2971-2981.
Brunet A., et al. (2000) J Biol Chem. 275: 37062-37071.

DATA

SDS-PAGE



3ug by SDS-PAGE under reducing condition and visualized by coomassie blue stain.