

Recombinant human SPECC1 protein

Catalog Number: ATGP2733

PRODUCT INFORMATION

Expression system

E.coli

Domain

458-761aa

UniProt No.

Q5M775

NCBI Accession No.

NP_690868

Alternative Names

Cytospin-B, CYTSB, HCMOGT-1, HCMOGT1, NSP

PRODUCT SPECIFICATION

Molecular Weight

37.7 kDa (327aa) confirmed by MALDI-TOF

Concentration

0.25mg/ml (determined by Bradford assay)

Formulation

Liquid in. 20mM Tris-HCl buffer (pH 8.0) containing 10% glycerol 1mM DTT, 0.1M NaCl

Purity

> 80% by SDS-PAGE

Tag

His-Tag

Application

SDS-PAGE

Storage Condition

Can be stored at +2C to +8C for 1 week. For long term storage, aliquot and store at -20C to -80C. Avoid repeated freezing and thawing cycles.

BACKGROUND

Description

SPECC1, also known as Cytospin-B, belongs to the cytospin-A family. This protein is involved in cytokinesis and spindle organization. It may play a role in actin cytoskeleton organization and microtubule stabilization and hence required for proper cell adhesion and migration. Recombinant human SPECC1 protein, fused to His-tag at N-terminus, was expressed in E. coli and purified by using conventional chromatography techniques.

Amino acid Sequence

MGSSHHHHHH SGLVPRGSH MGSTQEGKII ELEQKCTGIL EQGRFEREKL LNIQQQLTCS LRKVEEENQG ALEMIKRLKE

Recombinant human SPECC1 protein

Catalog Number: ATGP2733

ENEKLNFLERLHNNMMAKTLEECRVTL EGLKMENGL KSHLQGEKQK ATEASAVEQT AESCEVQEML KVARAEKDLL
ELSCNELRQE LLKANGEIKH VSSLLAKVEK DYSYLKEICD HQAEQLSRTS LKLQEKASES DAEIKDMKET IFELEDQVEQ
HRAVKLHNNQ LISELESSVI KLEEQKSDLE RQLKTLTKQM KEETEEWRRF QADLQTAVVV ANDIKCEAQQ ELRTVKKRLL
EEEEKNA

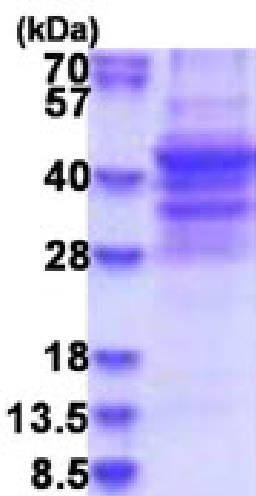
General References

Sang N. et al. (2004) *Oncogene*. 23:9438-9446.

D'Agostino L. et al. (2008) *Cell Cycle*. 7:1810-1827

DATA

SDS-PAGE



3ug by SDS-PAGE under reducing condition and visualized by coomassie blue stain.

15% SDS-PAGE (3ug)