

Recombinant human PD-L2/B7-DC protein

Catalog Number: ATGP2757

PRODUCT INFORMATION

Expression system

E.coli

Domain

20-200aa

UniProt No.

Q9BQ51

NCBI Accession No.

NP_079515

Alternative Names

Programmed cell death 1 ligand 2, B7DC, bA574F11.2, Btdc, CD273, PD-L2, PDCD1L2, PDL2

PRODUCT SPECIFICATION

Molecular Weight

22.8 kDa (204aa)

Concentration

1mg/ml (determined by Bradford assay)

Formulation

Liquid in. 20mM Tris-HCl buffer (pH 8.0) containing 0.4M urea, 10% glycerol

Purity

> 90% by SDS-PAGE

Tag

His-Tag

Application

SDS-PAGE, Denatured

Storage Condition

Can be stored at +2C to +8C for 1 week. For long term storage, aliquot and store at -20C to -80C. Avoid repeated freezing and thawing cycles.

BACKGROUND

Description

Programmed cell death 1 ligand 2, also known as PDCD1LG2, is involved in the costimulatory signal, essential for T-cell proliferation and IFNG production in a PDCD1-independent manner. Interaction with PDCD1 inhibits T-cell proliferation by blocking cell cycle progression and cytokine production. Recombinant human PDCD1LG2 protein, fused to His-tag at N-terminus, was expressed in E. coli.

Amino acid Sequence

MGSSHHHHHH SGLVPRGSH MGSFLTVPV KELYIIHGS NVTLECNFDT GSHVNLGAI ASLQKVENDT SPHRERATLL

Recombinant human PD-L2/B7-DC protein

Catalog Number: ATGP2757

EEQLPLGKAS FHIPQVQVRD EGQYQCIIY GVAWDYKYLK LKVKASYRKI NTHILKVPET DEVELTCQAT GYPLAEVSWP
NVSVPANTSH SRTPEGLYQV TSVLRLKPPP GRNFSCVFWN THVR

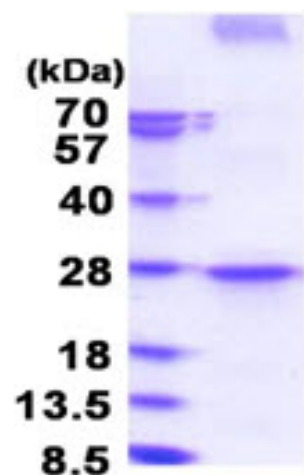
General References

Latchman Y., et al. (2001) Nat. Immunol. 2:261-268

Tseng S.-Y., et al. (2001) J. Exp. Med. 193:839-846

DATA

SDS-PAGE



15% SDS-PAGE (3ug)

3ug by SDS-PAGE under reducing condition and visualized by coomassie blue stain.