

# Recombinant human AMMECR1L protein

Catalog Number: ATGP2767

## PRODUCT INFORMATION

---

### Expression system

E.coli

### Domain

1-310aa

### UniProt No.

Q6DCA0

### NCBI Accession No.

NP\_113633

### Alternative Names

AMMECR1-like protein, AMME chromosomal region gene 1-like, MGC4268

## PRODUCT SPECIFICATION

---

### Molecular Weight

36.9 kDa (333aa) confirmed by MALDI-TOF

### Concentration

0.5mg/ml (determined by Bradford assay)

### Formulation

Liquid in. 20mM Tris-HCl buffer (pH 8.0) containing 0.15M NaCl, 10% glycerol, 1mM DTT

### Purity

> 90% by SDS-PAGE

### Tag

His-Tag

### Application

SDS-PAGE

### Storage Condition

Can be stored at +2C to +8C for 1 week. For long term storage, aliquot and store at -20C to -80C. Avoid repeated freezing and thawing cycles.

## BACKGROUND

---

### Description

AMMECR1L contains 1 AMMECR1 domain. Recombinant human AMMECR1L protein, fused to His-tag at N-terminus, was expressed in E. coli and purified by using conventional chromatography techniques.

### Amino acid Sequence

MGSSHHHHHHH SSGLVPRGSH MGSMGKRRCV PPLEPKLAAG CCGVKKPKLS GSGTHSHGNQ STTVPGSSSG  
PLQNHQHVDS SSGRENVSDL TLGPGNSPIT RMNPASGALS PLPRPNGTAN TTKNLVVTAE MCCYCFDVLY CHLYGFPQPR  
LPRFTNDPYP LFVTWKTGRD KRLRGCIETF SAMNLHSGLR EYTLTSALKD SRFPLPTREE LPKLFCSVSL LTNFEDASDY

# Recombinant human AMMECR1L protein

Catalog Number: ATGP2767

LDWEVGVHGI RIEFINEKGV KRTATYLPEV AKEQDWDQIQ TIDSLLRKGG FKAPITSEFR KTIKLTRYRS EKVTISYA EY  
IASRQHCFQN GTLHAPPLYN HYS

## General References

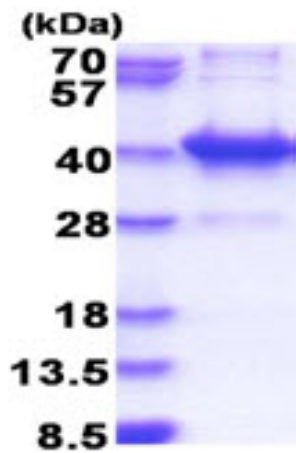
Mayya V., et al. (2009) *Sci. Signal.* 2:RA46-RA46

Dephoure N., et al. (2008) *Proc. Natl. Acad. Sci. u.S.A.* 105:10762-10767

## DATA

---

### SDS-PAGE



3ug by SDS-PAGE under reducing condition and visualized by coomassie blue stain.

15% SDS-PAGE (3ug)